

Electrical Notes:

- Note 1:** Wall mounted outlets located behind millwork or furniture. Exact Location to be determined with design of millwork. Access to be provided by cut-out at the back of the millwork or furniture
- Note 2:** Floor Mounted Outlets with flush cover for table feed. Exact location to be determined.
- Note 3:** Junction Box mounted above ceiling with 110V power for Projector. Provide connection back to wall mounted control panel.
- Note 4:** Junction Box mounted above ceiling with 110V power for Screen. Provide connection back to wall mounted control panel.
- Note 5:** Junction Box mounted above ceiling with 110v power for Drapes. Provide connection back to wall mounted control panel.
- Note 6:** Recessed Control Panel with Low Voltage connection to Screen, Projector and/or Drapes.
- Note 7:** Video Equipment rack mounted in Millwork . Provide 110V power. Power at Rack to be on same Phase Leg as Power at the ceiling mounted Projector.
- Note 8:** Junction Box Above Ceiling and at door Jamb for Door Control: See Security Drawings.

LIGHTING LEGEND

- ◆ FLUORESCENT DOWN LIGHT, 277V.
- INCANDESCENT DOWN LIGHT

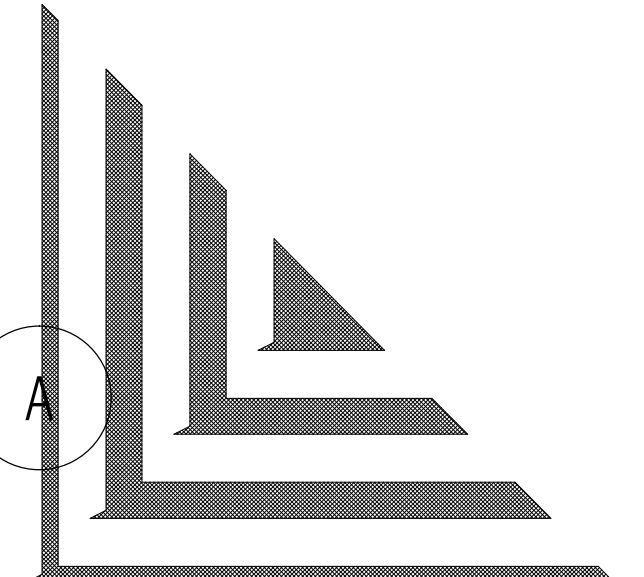
KEY

- ◆ AF
- 3V
- RS
- ◆ 2 x 2 FLUORESCENT
- ◆ 2 x 2 FLUORESCENT W/ BATTERY BACKUP EMG

THIRD LEVEL LIGHTING PLAN
SCALE: 1/8" = 1'-0"

date

7 / 30 / 2002:
8 / 6 / 2002:
8 / 7 / 2002:
10 / 23 / 2002:
1 / 25 / 2002:
2 / 7 / 2002:



**DesRosiers
Architects**

86360 Woodward Avenue
Bloomfield Hills, MI 48304
248 / 642-7771

project
**Penske
Headquarters**
Bloomfield Twp., Michigan

sheet title
**SECOND FLOOR
PLAN**

KEY

- EXISTING WALL TO REMAIN
- NEW WALL

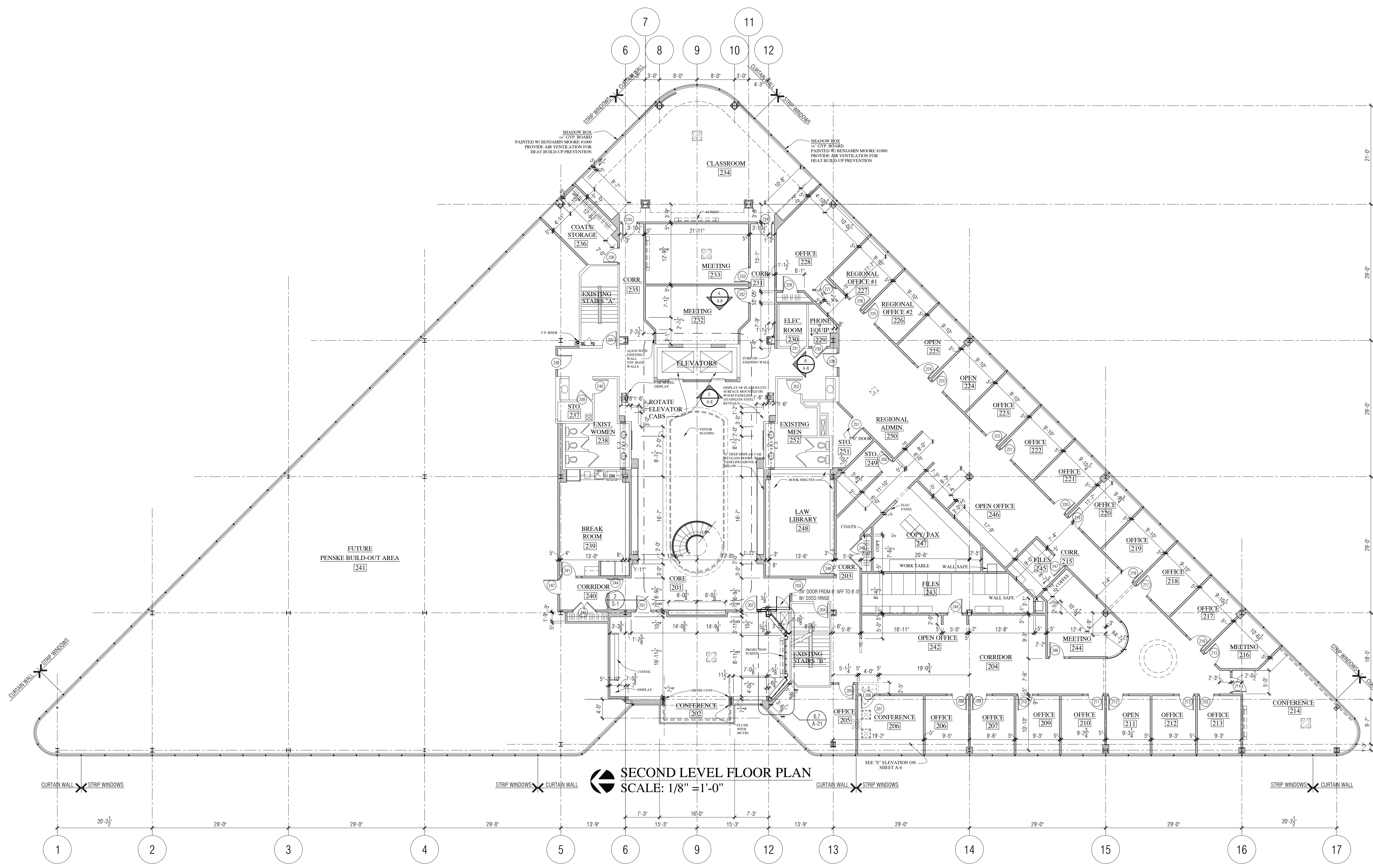
date

6/19/2002	REVISION
6/26/2002	REVISION
7/25/2002	REVISION
8/8/2002	
9/6/2002	
9/7/2002	
10/16/2002	
11/21/2002	

job
0131

AutocAD v14
R:\active\job\0131
sheet

A-3



SECOND LEVEL FLOOR PLAN
SCALE: 1/8" = 1'-0"