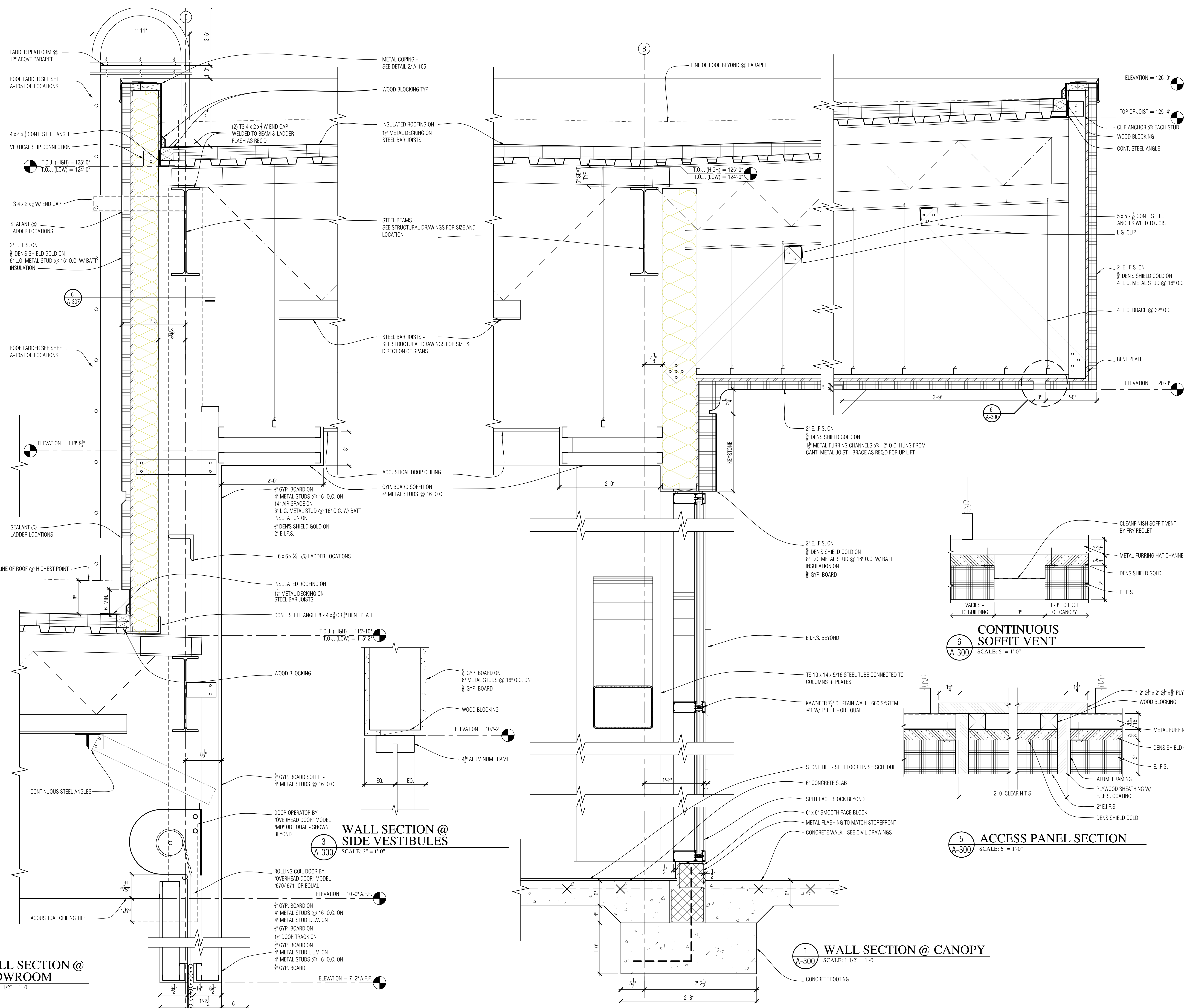


DesRosiers Architects

36330 Woodward Avenue
Bloomfield Hills, MI 48304
248 / 642-7771

project
Wolfchase - Toyota
2201 N. Germantown Pkwy.
Memphis, TN. 38018

sheet title
WALL SECTIONS



2 WALL SECTION @ SHOWROOM
SCALE: 1/16" = 1'-0"

3 WALL SECTION @ SIDE VESTIBULES
SCALE: 3/8" = 1'-0"

1 WALL SECTION @ CANOPY
SCALE: 1/16" = 1'-0"

6 CONTINUOUS SOFFIT VENT
SCALE: 6" = 1'-0"

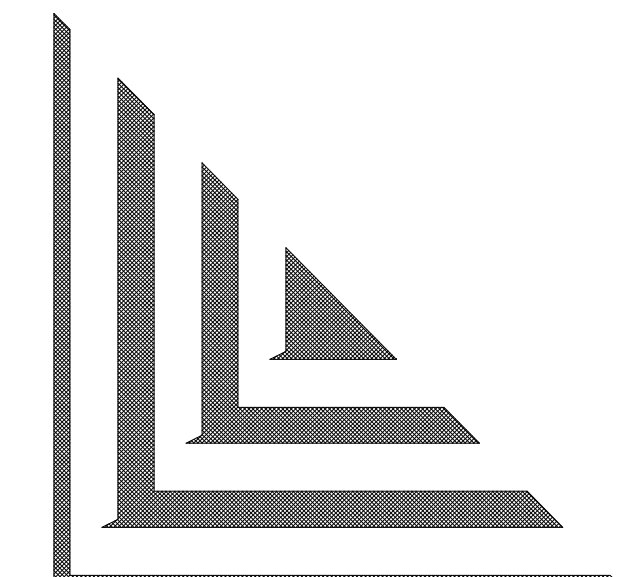
5 ACCESS PANEL SECTION
SCALE: 6" = 1'-0"

date	description
12/8/2004	BUILDING PERMIT
12/13/2004	REVISIONS
6/8/2005	REVISIONS
7/12/2005	REVISIONS
9/8/2005	REVISIONS
10/26/2005	REVISIONS

job
0324

AutoCAD v100
iVactive job/0324
sheet

A-300



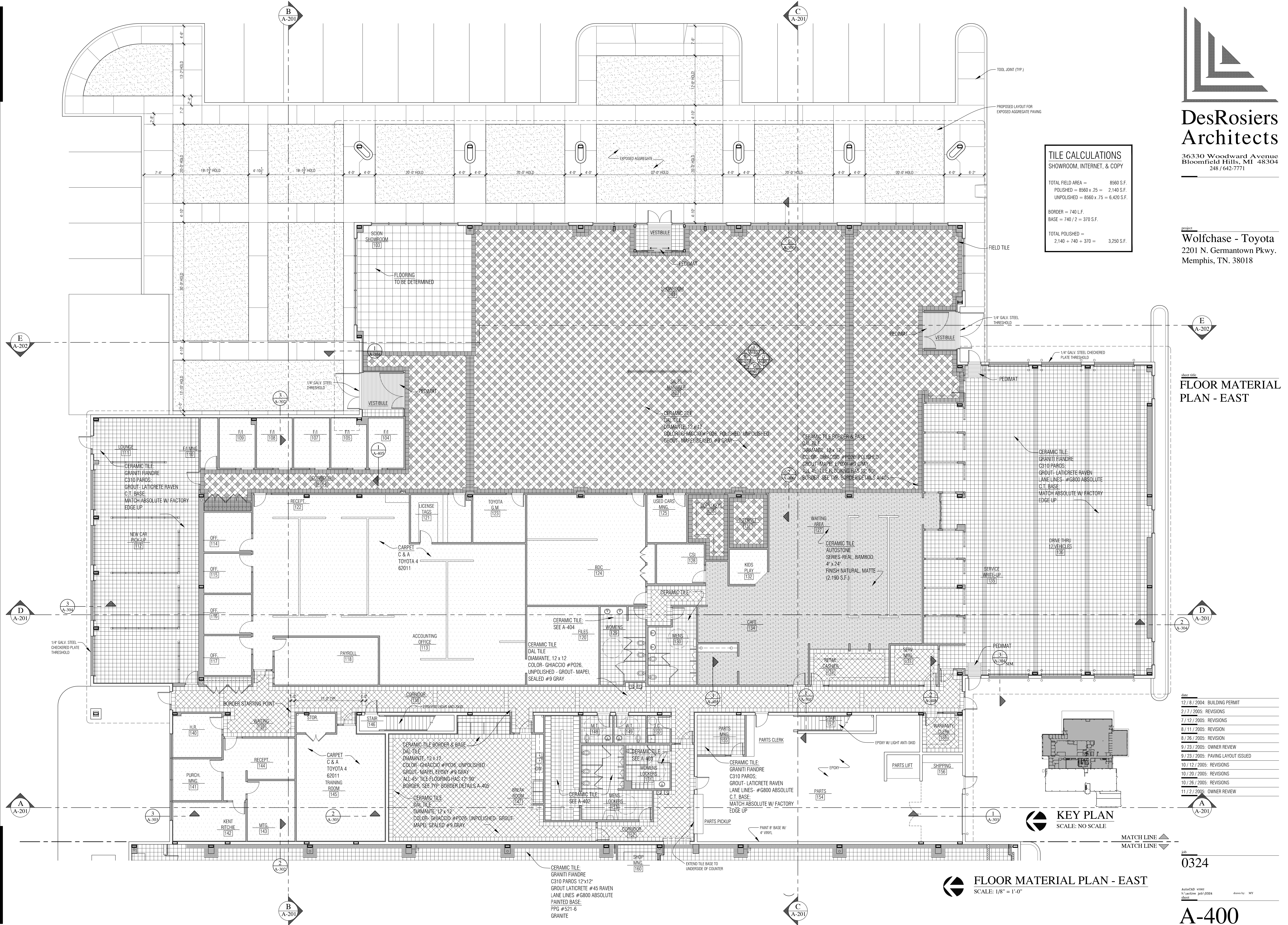
DesRosiers Architects

36330 Woodward Avenue
Bloomfield Hills, MI 48304
248 / 642-7771

project
Wolfchase - Toyota
2201 N. Germantown Pkwy.
Memphis, TN. 38018

sheet title
FLOOR MATERIAL PLAN - EAST

TILE CALCULATIONS	
SHOWROOM, INTERNET, & COPY	
TOTAL FIELD AREA =	8560 S.F.
POLISHED = 8560 x .25 =	2,140 S.F.
UNPOLISHED = 8560 x .75 =	6,420 S.F.
BORDER = 740 L.F.	
BASE = 740 / 2 =	370 S.F.
TOTAL POLISHED =	2,140 + 740 + 370 =
	3,250 S.F.



date

12 / 8 / 2004	BUILDING PERMIT
2 / 7 / 2005	REVISIONS
7 / 12 / 2005	REVISIONS
8 / 11 / 2005	REVISION
8 / 26 / 2005	REVISION
9 / 23 / 2005	OWNER REVIEW
9 / 23 / 2005	PAVING LAYOUT ISSUED
10 / 12 / 2005	REVISIONS
10 / 20 / 2005	REVISIONS
10 / 26 / 2005	REVISIONS
11 / 2 / 2005	OWNER REVIEW



KEY PLAN
SCALE: NO SCALE

FLOOR MATERIAL PLAN - EAST
SCALE: 1/8" = 1'-0"

job
0324

AutoCAD: vmm
N:\active_j03\0324
sheet

drawn by: MY
A-400