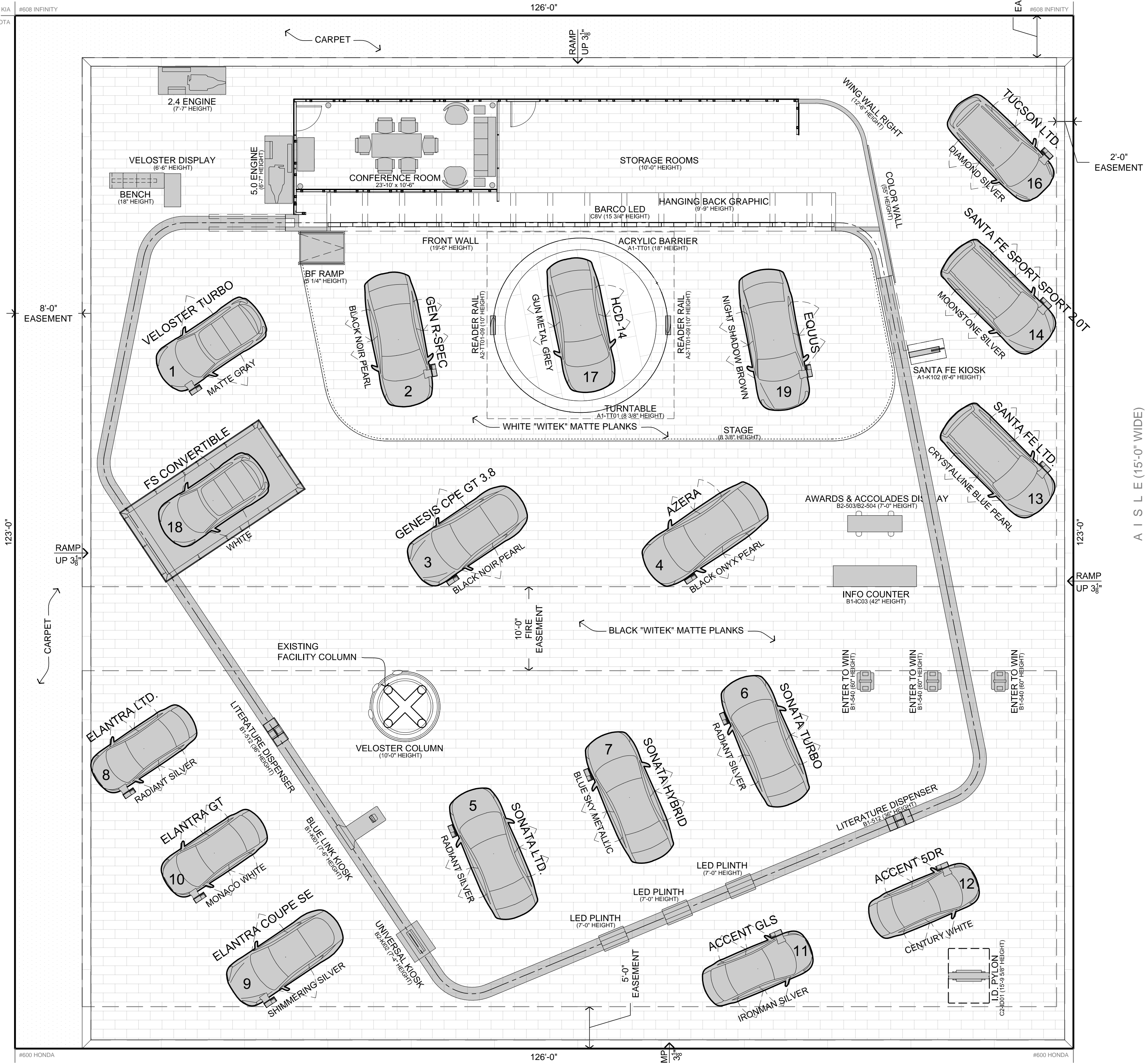


No.	Model Year	Model Information			Packaging		Color			Comments	
		Model	Trim	Engine	Model Code	Package Name	Package Code	Exterior	Interior		Color Code
1	2013	Veloster Turbo		1.6L Turbo I4	F0373F4S		01	Matte Gray	Black	S2G RY	KMHTCGAR0DU13529S
2	2013	Genesis	R-Spec	5.0L GDI DOHC V8	B0482R8S		01	Black Noir Pearl	Jet Black	AF RY	KMHG4ADH3DU23242
3	2013	Genesis Coupe	Grand Touring	3.8L GDI DOHC V6	C0342R6S		01	Black Noir Pearl	Tan	AF 9P	KMHU6H4J3DU08113
4	2013	Azera		3.8L GDI DOHC V6	73422F6S	Technology	02	Black Onyx Pearl	Black	AA RY	KMHF4AJG4DA249936
5	2013	Sonata	Limited	2.4L GDI I4	27472F4S	Premium	05	Radiant Silver	Gray	SM RA	5NPEC4AC7DH687550
6	2013	Sonata Turbo	Limited	2.0T GDI I4	27452F4S	Premium	05	Radiant Silver	Black	SM RY	5NPEC4A85DH687554
7	2013	Sonata Hybrid		2.4L Theta DOHC I4	G0442F4S		02	Blue Sky Metallic	Gray	Y2U RAS	KMHEC4A44DA050773
8	2013	Elantra	Limited	1.8L Nu MPI I4	45442F4S	Technology	03	Radiant Silver	Black	SM RY	5NPDH4AE5DH287954
9	2013	Elantra Coupe	SE	1.8L Nu MPI I4	H0242F4P	Technology	02	Shimmering Silver	Black	N3S RY	KMHD6AE9DU019325
10	2013	Elantra GT		1.8L Nu MPI I4	D1502F4P		04	Monaco White	Black	YAC RY	KMHJ35LE1DU082120
11	2013	Accent	GLS	1.6L GDI DOHC I4	16402F4S	Premium	02	Ironman Silver	Gray	RHM 9Y	KMHCU4AE2DU427077
12	2013	Accent 5 Door	SE	1.6L GDI DOHC I4	16542F4S		01	Century White	Gray	PGU 9Y	KMHCU5AE4DU100119
13	2013	Santa Fe	Limited	3.3L GDI DOHC V6	J0442A6S	Technology	03	Crystalline Blue	Gray	V9U VYN	KM8SRDH9DU000541
14	2013	Santa Fe Sport		2.0T GDI I4	63442A4S	Technology	06	Moonstone silver	Gray	3D VFG	5XYZWDLADG067439
15	2013	Santa Fe Sport		2.4L Theta DOHC I4	63402A4S	Technology	04	Frost White Pearl	Gray	SWP VFG	5XYZUDLBD0G063213
16	2013	Tucson	Limited	2.4L Theta DOHC I4	83462A4P	Premium	02	Diamond Silver	Black	WEA 9P	KM8JUCAS5DU689806
Specialty Vehicles											
17	HCD-14							Gun Metal Grey			
18	Veloster Roll Top			1.6L Turbo I4				White			
19	Equus - Facelift			5.0L GDI DOHC V8				Night Shadow Brown			

3.7.2013



**PUBLIC FLOOR PLAN**  
SCALE: 1/8" = 1'-0"

PROPERTIES			
PROP. #	PROPERTY NAME	HEIGHT	QTY.
-	2.4 ENGINE	7'-7"	1
-	5.0 ENGINE	6'-7"	1
-	6' SKIRTED TABLE	28"	2
-	6 X 3 SIGN	6'-0"	1
-	BENCH OTTOMAN	17"	28
-	BENCH	18"	1
-	BF RAMP	5 1/4"	1
-	BRAVO CR BAR TABLE	36"	1
-	BUG AND LOGO	30"	4
-	CATERING TABLE	36"	1
-	COFFEE TABLE	12"	2
-	COLOR WALL	55"	1
-	CUSTOM TRUSS 1	20 1/2"	1
-	CUSTOM TRUSS 2	20 1/2"	1
-	FRONT WALL	19'-6"	1
-	HANGING BACK GRAPHIC	9'-9"	1
-	HOW BANNER	6'-0"	2
-	LASZLO SOFA	32"	1
-	LED PLINTH	7'-0"	3
-	ORANGE PEEL CHAIR	45"	2
-	PERFORMANCE AREA	6"	1
-	PODIUM	42"	1
-	RADIUSED TRUSS	20 1/2"	5
-	SQUARE OTTOMAN	17"	12
-	STAGE	8 3/8"	1
-	STEP & REPEAT	6"	1
-	TRUSS 10 FT	20 1/2"	26
-	TRUSS 4 FT	20 1/2"	1
-	TRUSS 8 FT	20 1/2"	2
-	VELOSTER COLUMN	10'-0"	1
-	VELOSTER DISPLAY	6'-6"	1
-	WING WALL RIGHT	12'-6"	1
A1-K102	SANTA FE KIOSK	6'-6"	1
A1-TT01	ACRYLIC BARRIER	18"	1
A1-TT01	TURNTABLE	8 3/8"	1
A1-WS01	WHEEL-STAND	42"	16
A2-TT01-09	READER RAIL	10"	2
B1-512	LITERATURE DISPENSER	36"	2
B1-540	ENTER TO WIN	60"	3
B1-FN01-01	MARKUS SWIVEL CHAIR	56"	6
B1-FN01-02	THORNSBY DINING TABLE	29 1/2"	1
B1-FN01-04	VIDJA FLOOR LAMP	54"	4
B1-I-C03	INFO COUNTER	42"	1
B1-K101	BLUE LINK KIOSK	7'-6"	1
B2-000-004	AWARDS & ACCOLADES DISPLAY	7'-0"	1
B2-K102	UNIVERSAL KIOSK	7'-4"	1
B2-VH01	VEHICLE BARRIER	24"	1
C2-ID01	I.D. PYLON	15'-9 5/8"	1

**V06.3 FINAL - 03.14.2013**  
**SP01 - PUBLIC FLOOR PLAN**

**2013 NEW YORK INTERNATIONAL AUTO SHOW**  
**SP01 - PUBLIC FLOOR PLAN**

DO NOT SCALE DRAWINGS

*H.B. Stubbs* COMPANIES

27027 Mound Road  
Warren, MI 48092  
(586) 574-9700

1957 South 4800 West  
Salt Lake City, UT 84104  
(801) 973-7887

hbstubbs.com

ACCT. EXEC.	DESIGN	ENGINEERING
JT	EDC	JKR, JA
CREATION DATE	ISSUE DATE	RELEASE DATE
10.17.2012	6.19.2013	03.14.2013

CLIENT: HYUNDAI

SHOW NAME & YEAR: 2013 NEW YORK INTERNATIONAL AUTO SHOW

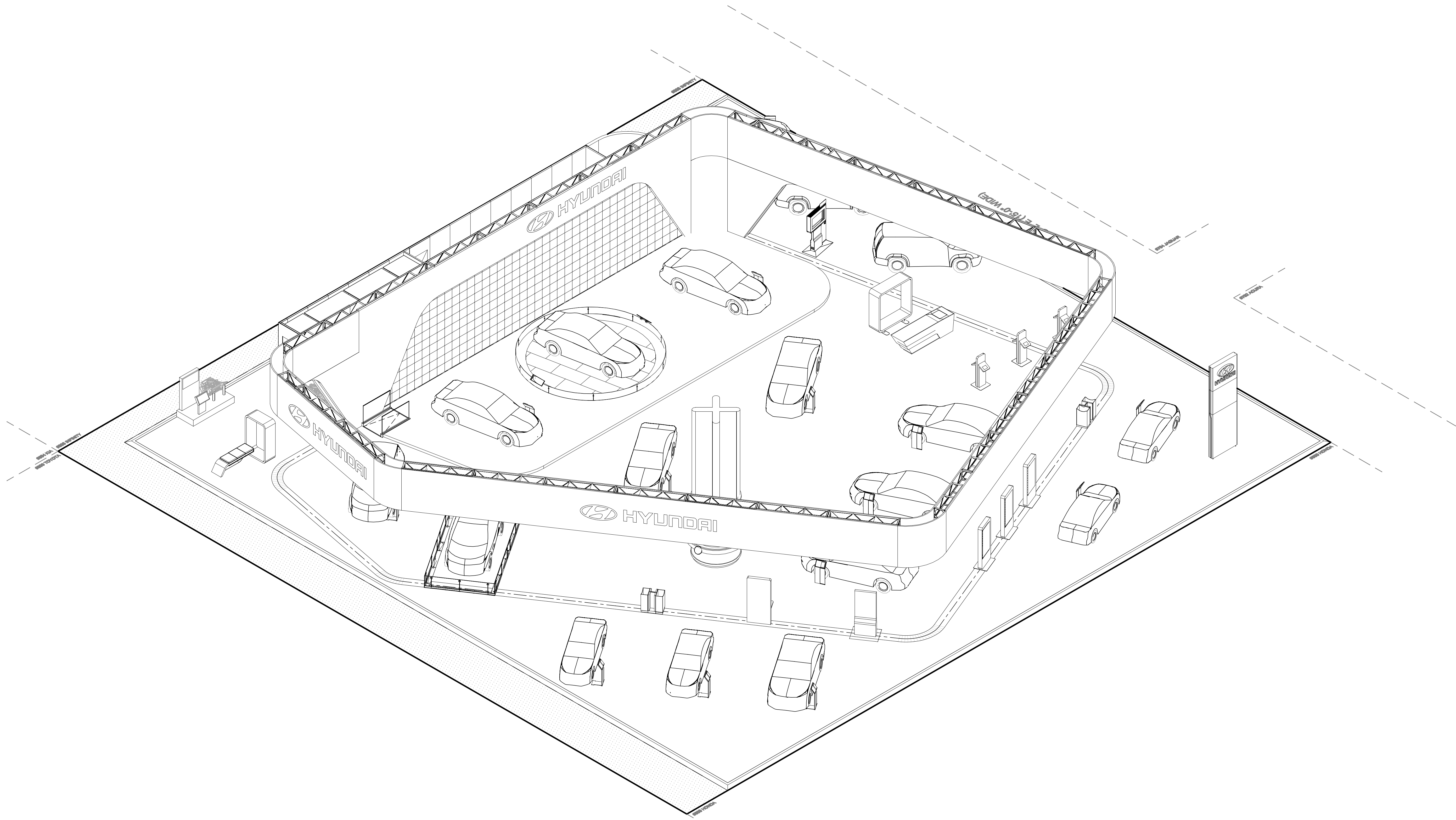
FACILITY: JACOB JAVITS CONVENTION CENTER  
SOUTH HALL, LEVEL 3  
655 W. 34TH STREET, NEW YORK, NY 10001

SETUP DATE	SHOW START	SHOW END
----	03.29.2013	04.07.2013

BOOTH NUMBER	BOOTH AREA	HEIGHT RESTRICTION
NH15	13,172 S.F.	25'-0"

SHEET NO.	SHEET NAME
SP01	PUBLIC FLOOR PLAN

PROJECT NUMBER	PHASE
<b>3-03-138</b>	<b>096</b>



**FRONT ISOMETRIC**  
SCALE: N.T.S.

V06.3 FINAL - 03.14.2013

SP03 - FRONT ISOMETRIC

2013 NEW YORK INTERNATIONAL AUTO SHOW

DO NOT SCALE DRAWINGS

*H.B. Stubbs*  
COMPANIES

27027 Mound Road 1957 South 4800 West  
Warren, MI 48092 Salt Lake City, UT 84104  
(586) 574-9700 (801) 973-7887

hbstubbs.com

Copyright © 2013 H.B. Stubbs Companies. This document is the property of, and contains information proprietary to, the H.B. Stubbs Companies. Any party accepting this document does so in confidence and agrees that it shall not be duplicated, in whole or in part, or disclosed to others, without written permission of the H.B. Stubbs Companies.

ACCT. EXEC.	DESIGN	ENGINEERING
JT	EDC	JKR, JA
CREATION DATE 10.17.2012	ISSUE DATE 6.19.2013	RELEASE DATE 03.14.2013

CLIENT  
**HYUNDAI**

SHOW NAME & YEAR  
2013 NEW YORK INTERNATIONAL AUTO SHOW

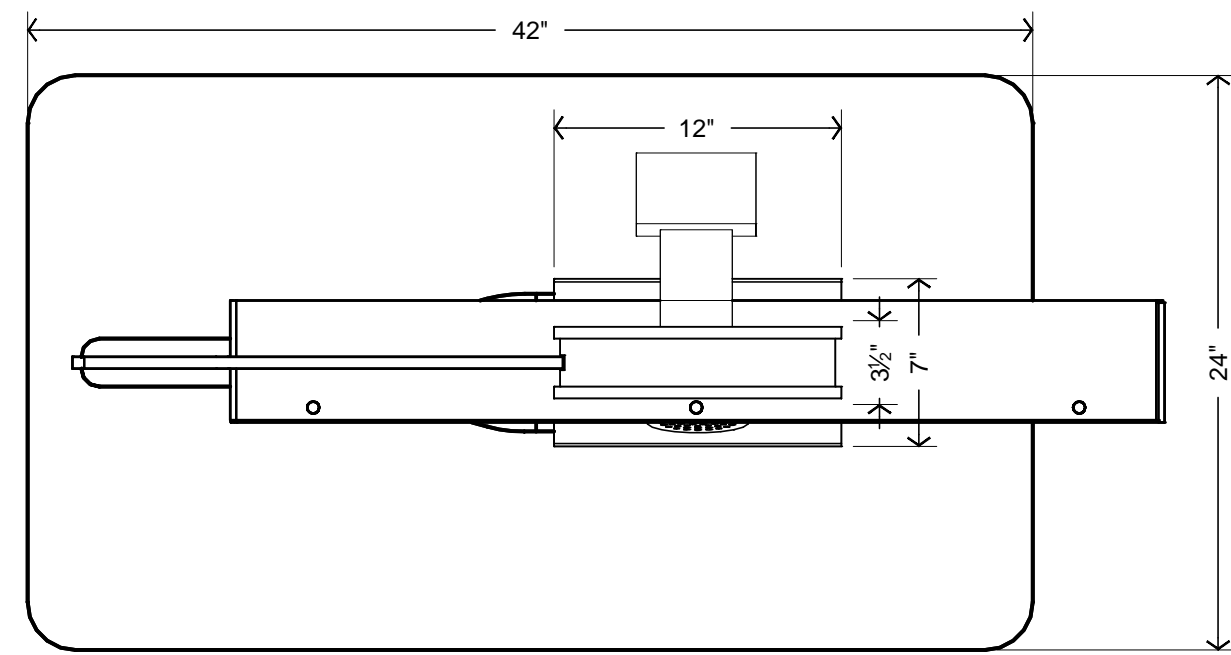
FACILITY  
JACOB JAVITS CONVENTION CENTER  
SOUTH HALL, LEVEL 3  
655 W. 34TH STREET, NEW YORK, NY 10001

SETUP DATE	SHOW START	SHOW END
----	03.29.2013	04.07.2013

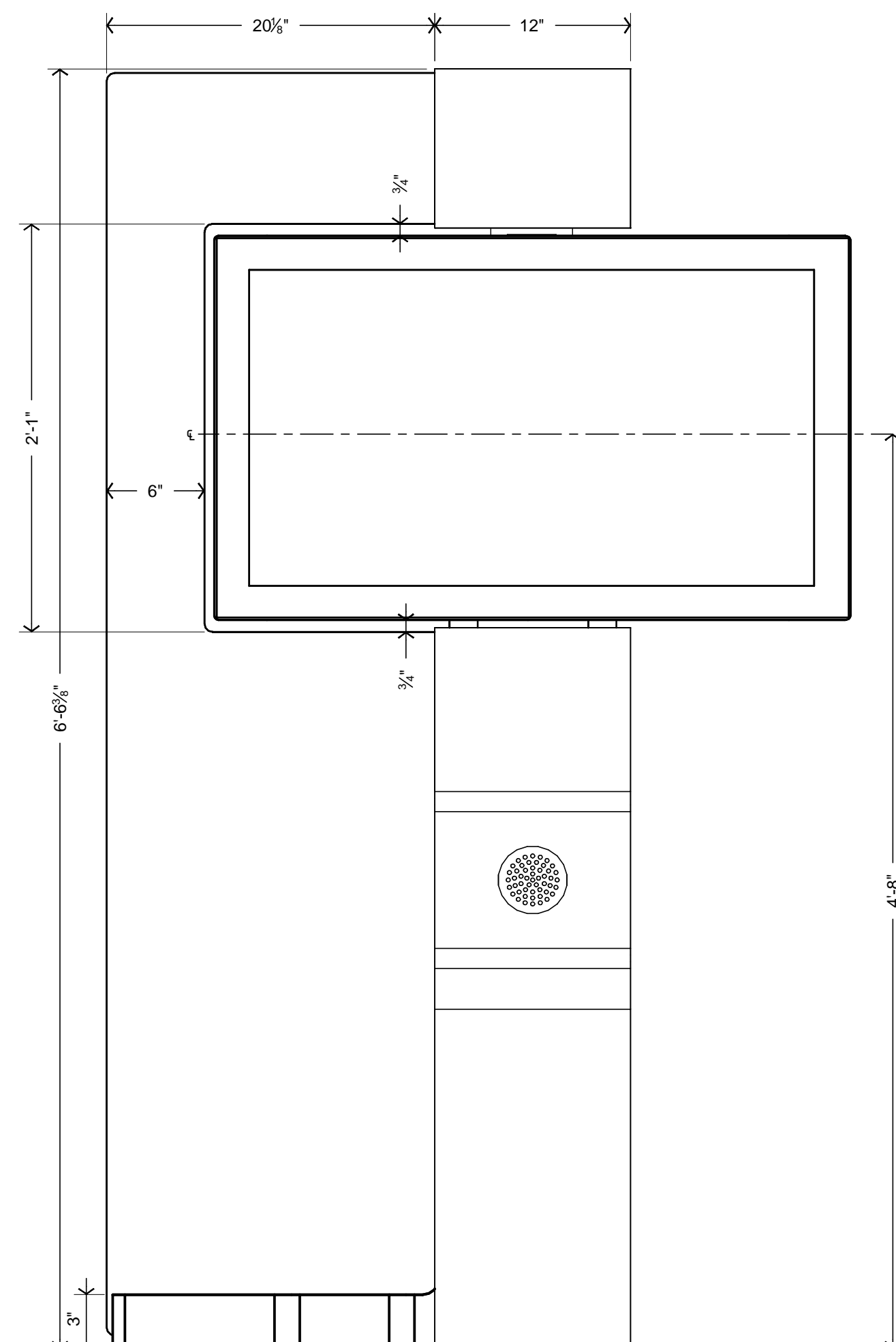
BOOTH NUMBER	BOOTH AREA	HEIGHT RESTRICTION
NH15	13,172 S.F.	25'-0"

SHEET NO.	SHEET NAME
SP03	FRONT ISOMETRIC

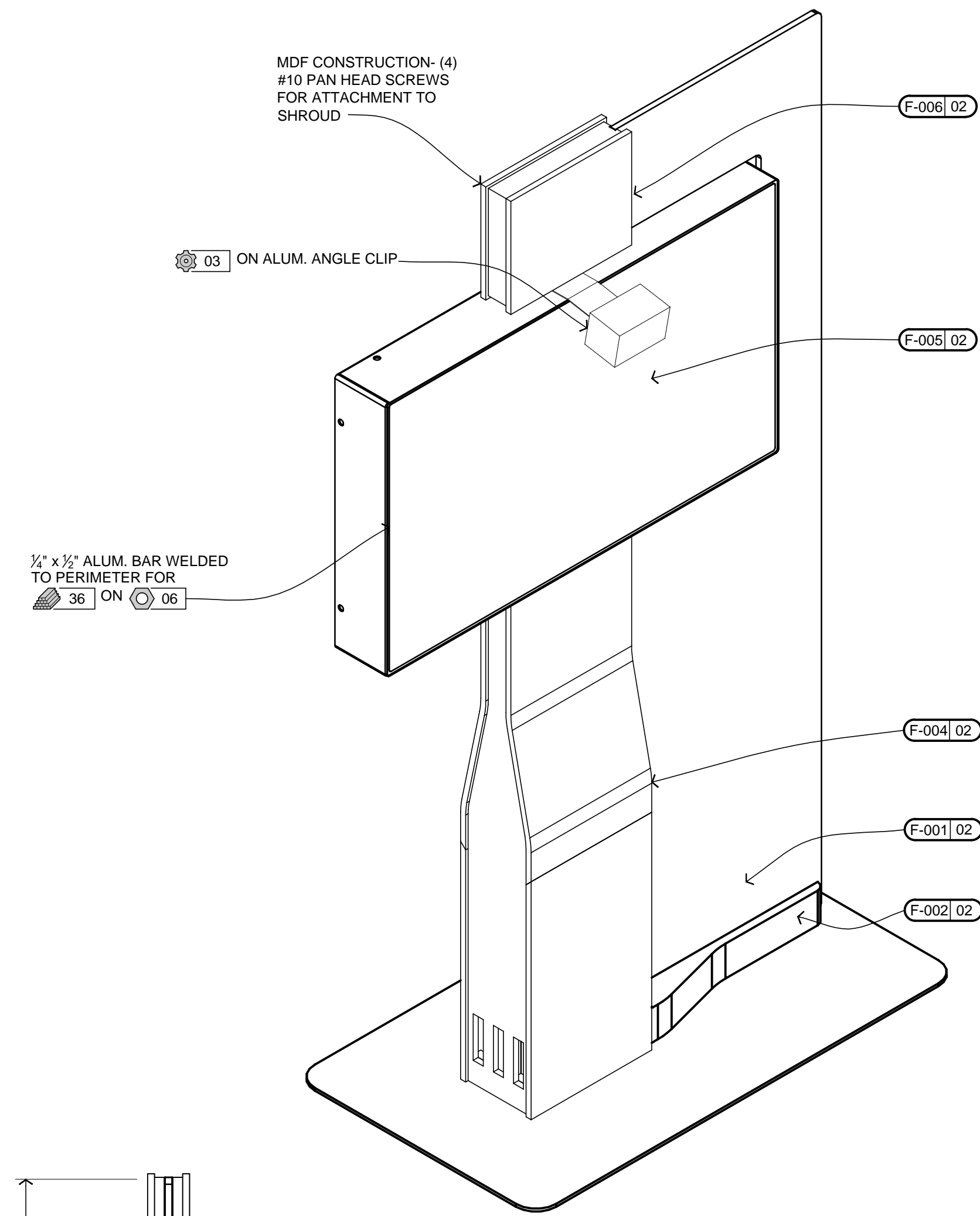
PROJECT NUMBER	PHASE
<b>3-03-138</b>	<b>096</b>



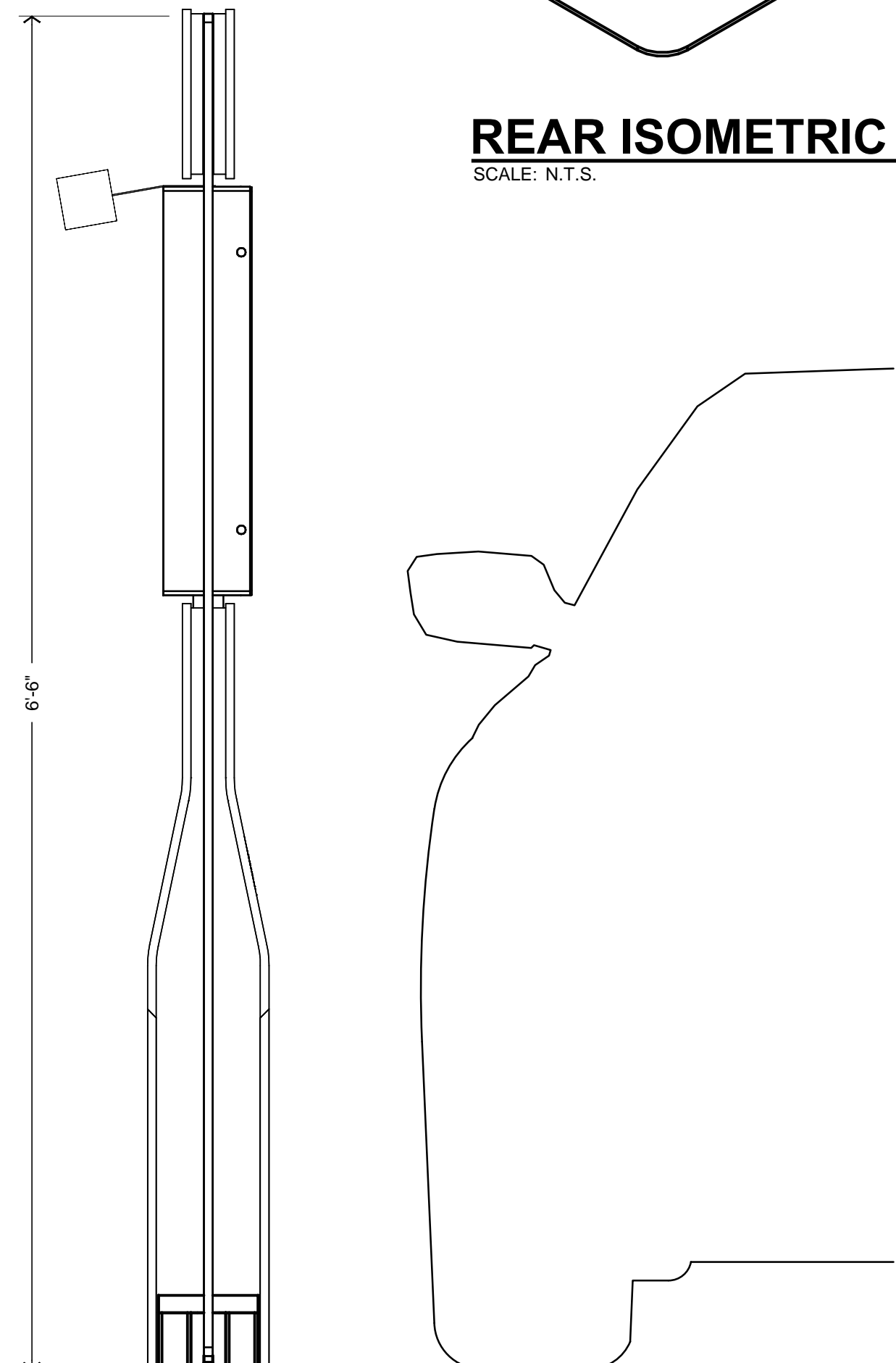
**PLAN VIEW**  
SCALE: 1 1/2" = 1'-0"



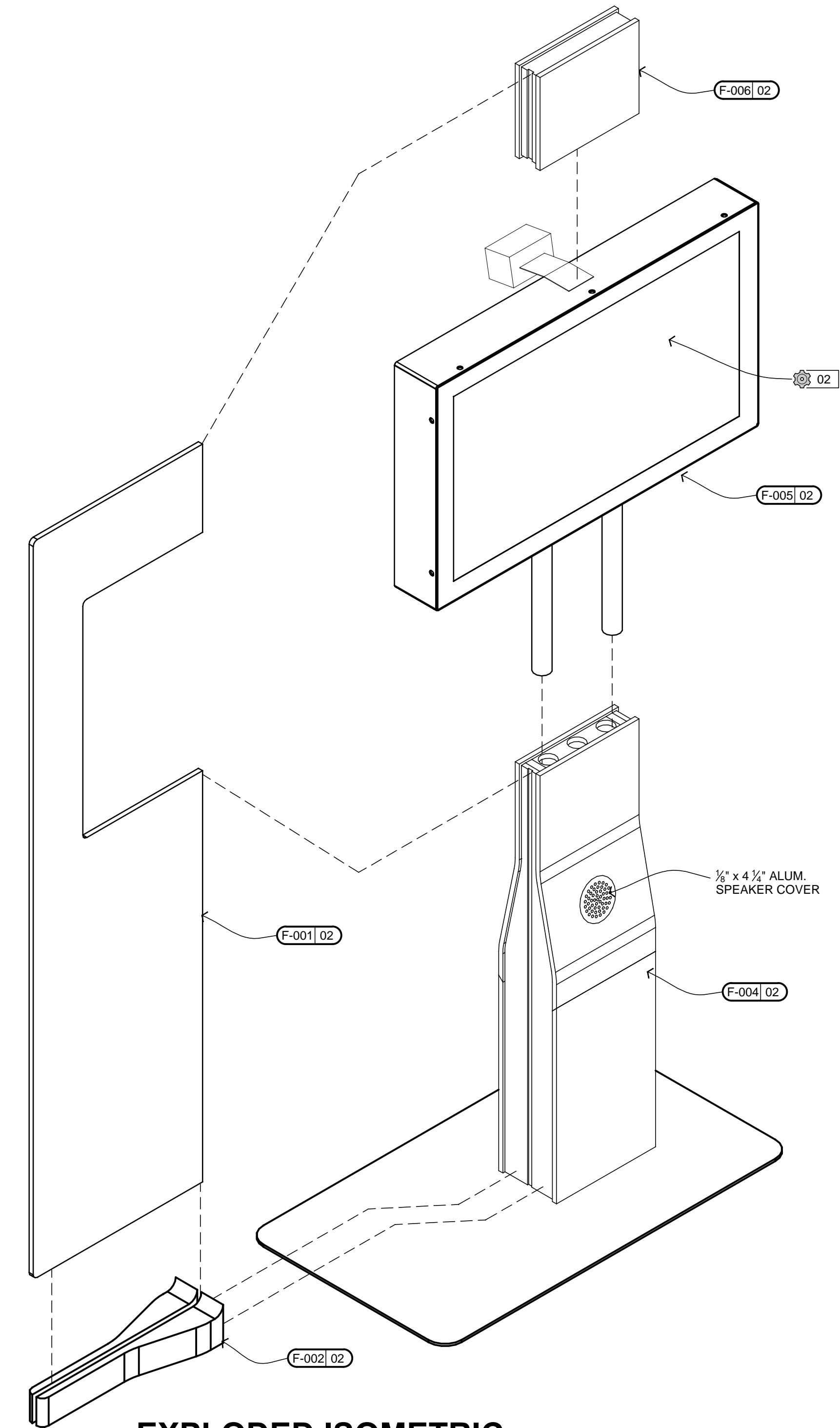
**FRONT ELEVATION**  
SCALE: 1 1/2" = 1'-0"



**REAR ISOMETRIC**  
SCALE: N.T.S.



**SIDE ELEVATION**  
SCALE: 1 1/2" = 1'-0"



**EXPLODED ISOMETRIC**  
SCALE: N.T.S.

FABRICATED PARTS			
TAG	QTY.	SOURCE	DESCRIPTION
F-001	01	SUB	GLASS PANEL
F-002	01	HBS	GLASS BASE
F-004	01	HBS	BASE CABINET
F-005	01	HBS	SHROUD
F-006	01	HBS	SHROUD TOPPER
BUILDING MATERIALS			
TAG	PART #	DESCRIPTION	
36	SW3	SNTRA PVC FOAM BOARD, 3mm [1/8"], WHITE	
FASTENERS & HARDWARE			
TAG	PART #	DESCRIPTION	
06		VELCRO,	
EQUIPMENT & FURNITURE			
TAG	MANUFACTURER	DESCRIPTION	QTY.
02	NEC P402	47" LCD MULTITOUCH W/3M DST TOUCHSUS. BY: -	01
03	LOGITECH C910	3.75W x 3D x 1.3" HD PRO WEBCAM BY: -	01

**RELEASE TO PRODUCTION**  
EST. | DESIGN | ENGR. | PROD. | EXEC. | DATE  
DY | JKR | AS | 11.09.2011

DO NOT SCALE DRAWINGS

*H.B. Stubbs*  
COMPANIES

Detroit - Salt Lake City  
588.574.9700  
hbstubbs.com

Copyright © 2011 H.B. Stubbs Companies. This document is the property of, and contains information proprietary to the H.B. Stubbs Companies. Any party accepting this document does so in confidence and agrees that it shall not be duplicated, in whole or in part, nor disclosed to others, without written permission of the H.B. Stubbs Companies.

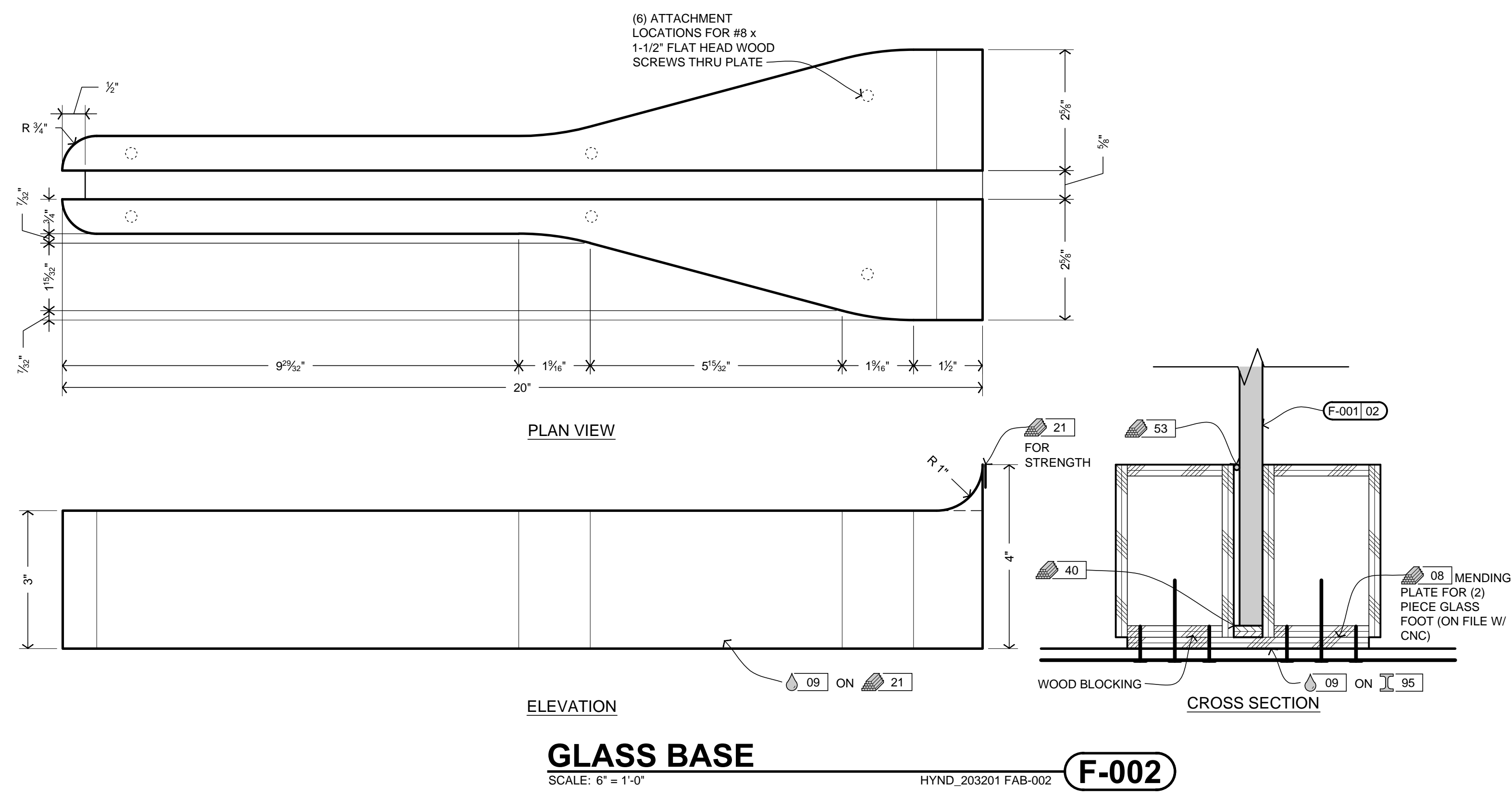
PROJ. MGR.	DESIGNER	ENGINEER
KB	EC, DY	JKR, JA, TL
CREATION DATE	ISSUE DATE	RELEASE DATE
10.13.2011	6.19.2013	11.09.2011

CLIENT NAME	QUANTITY
HYUNDAI	1

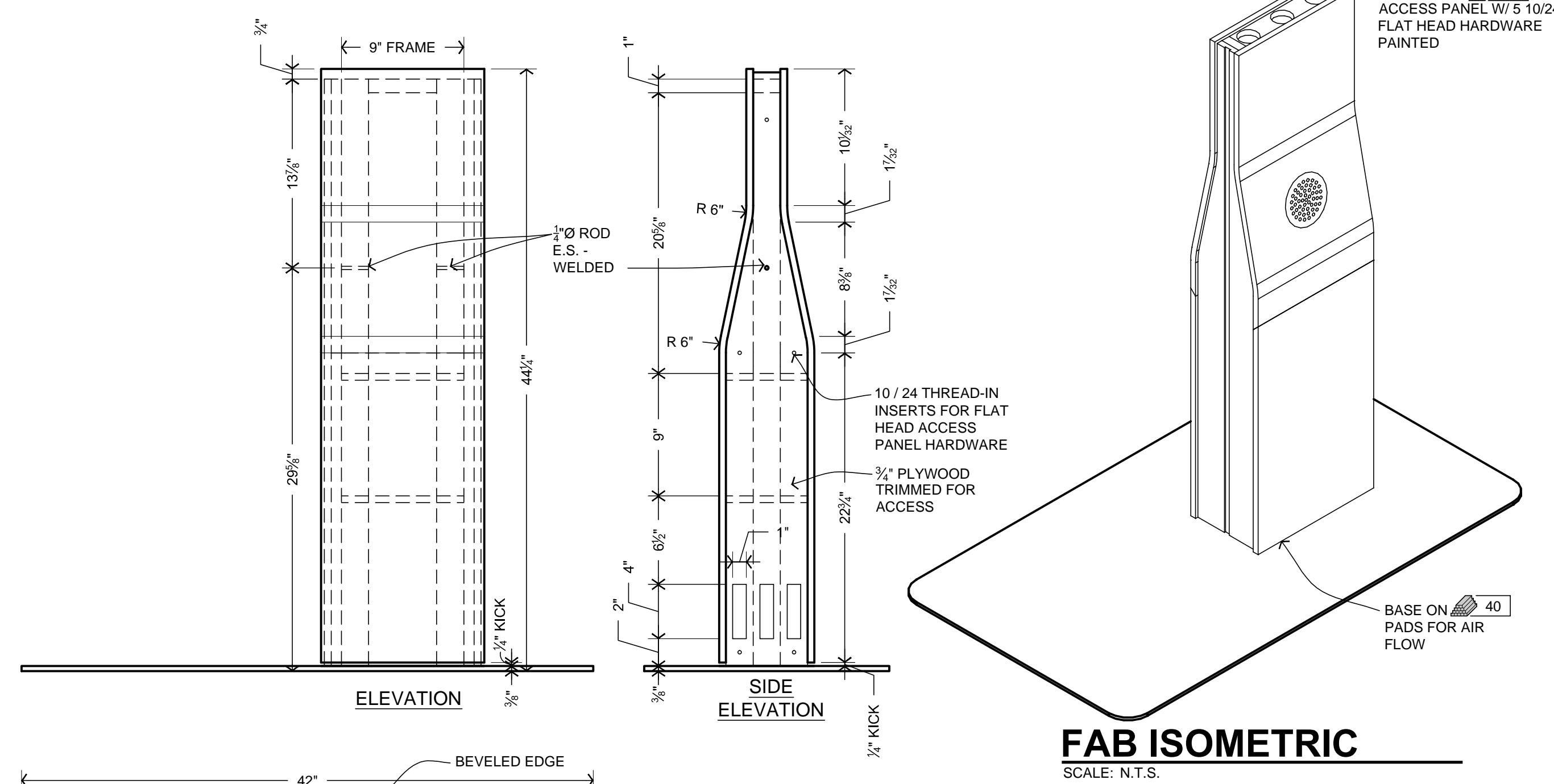
ELEMENT NAME	QUANTITY
HYBRID AR DISPLAY C1-K102	1
SHEET NO.	DRAWING TITLE
01	PLAN, ELEVATION, & ISOMETRIC

PROJECT NUMBER	PHASE
203400	034

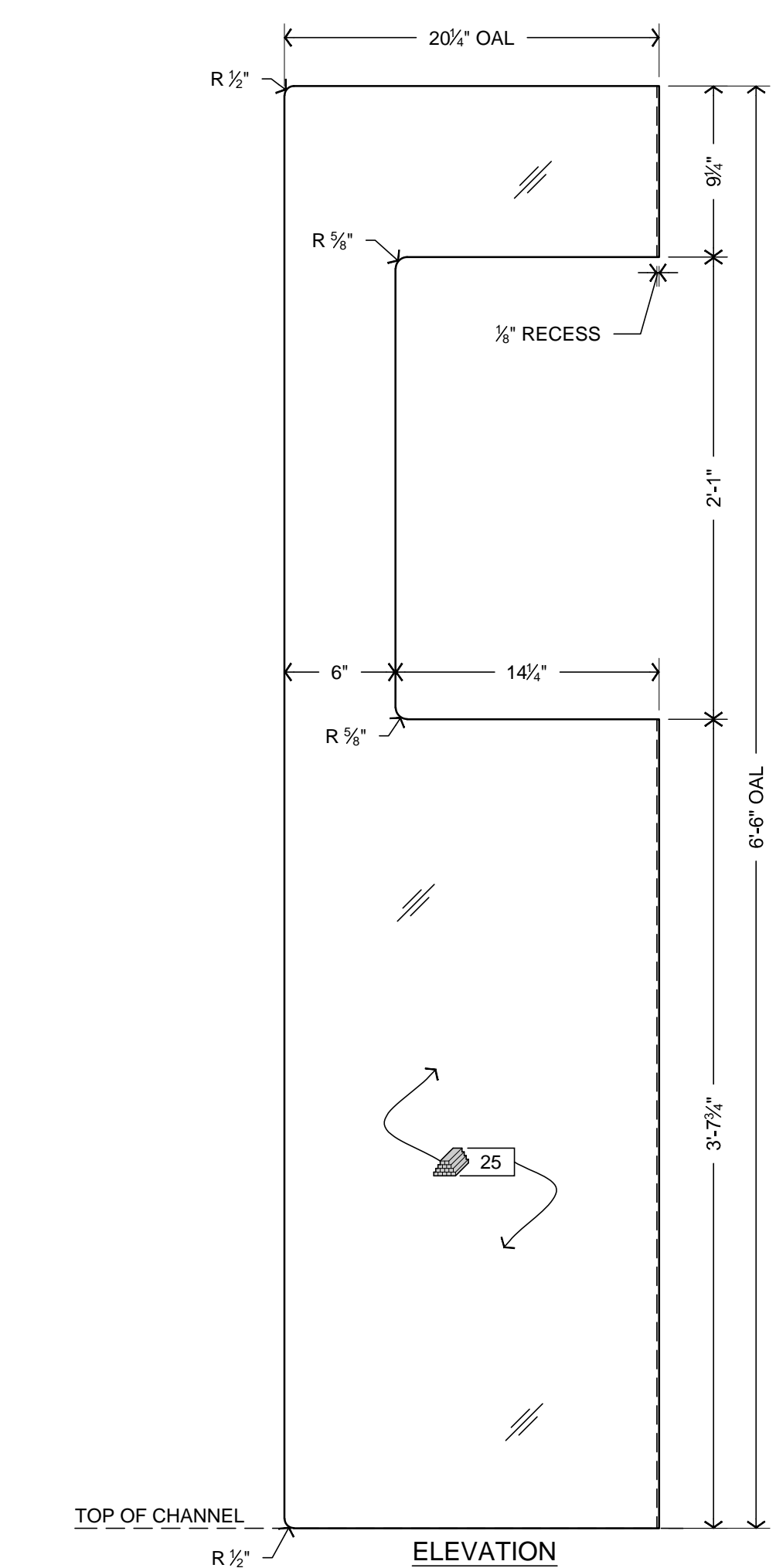
'AS-BUILT' RECORD DOCUMENT  
THIS DOCUMENT HAS RECEIVED ITS FINAL  
UPDATES TO REFLECT CHANGES MADE  
DURING THE CONSTRUCTION PROCESS.



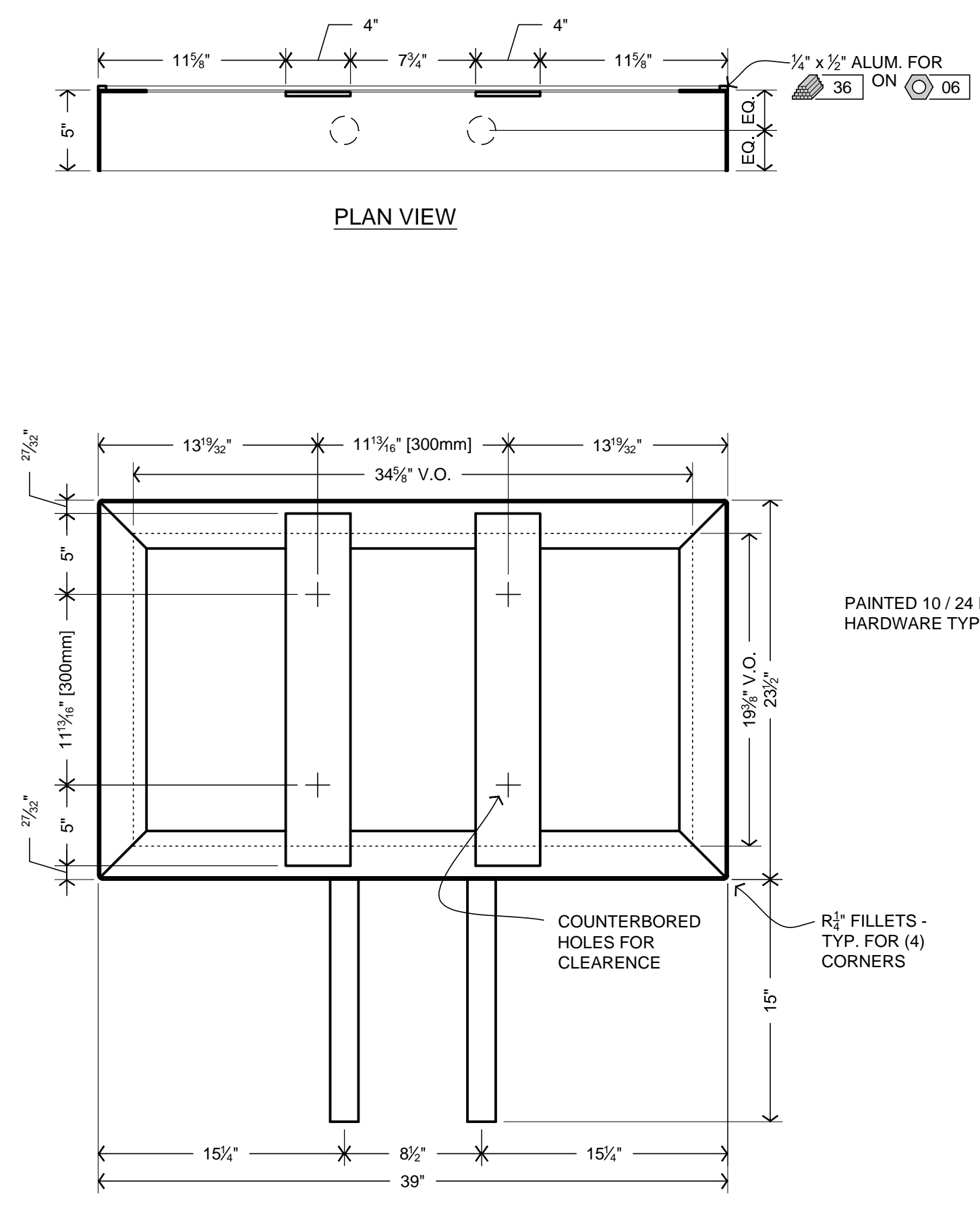
**GLASS BASE**  
SCALE: 6" = 1'-0"  
HYND\_203201 FAB-002 **F-002**



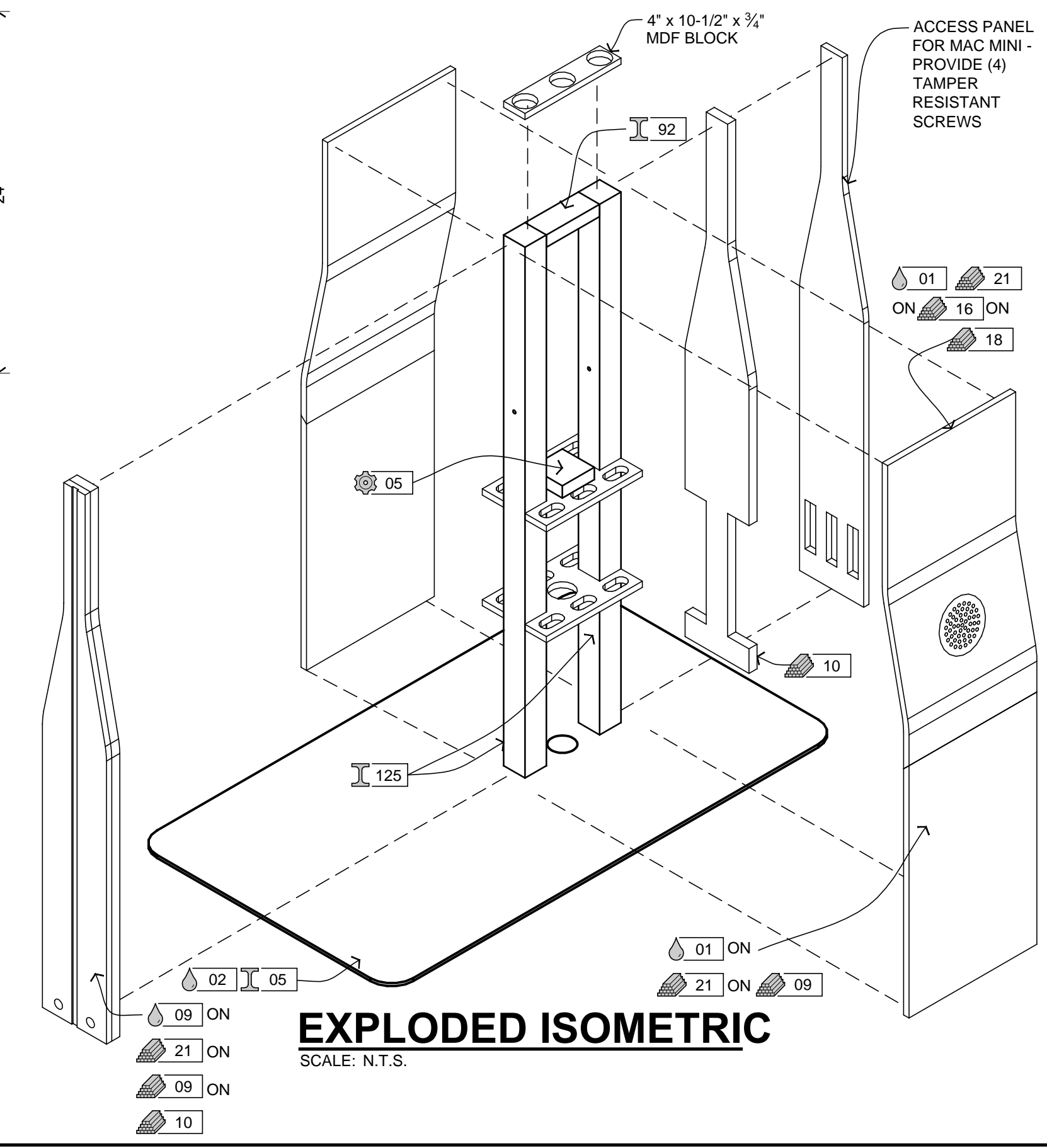
**BASE CABINET**  
SCALE: 1-1/2" = 1'-0"  
HYND\_203201 FAB-004 **F-004**



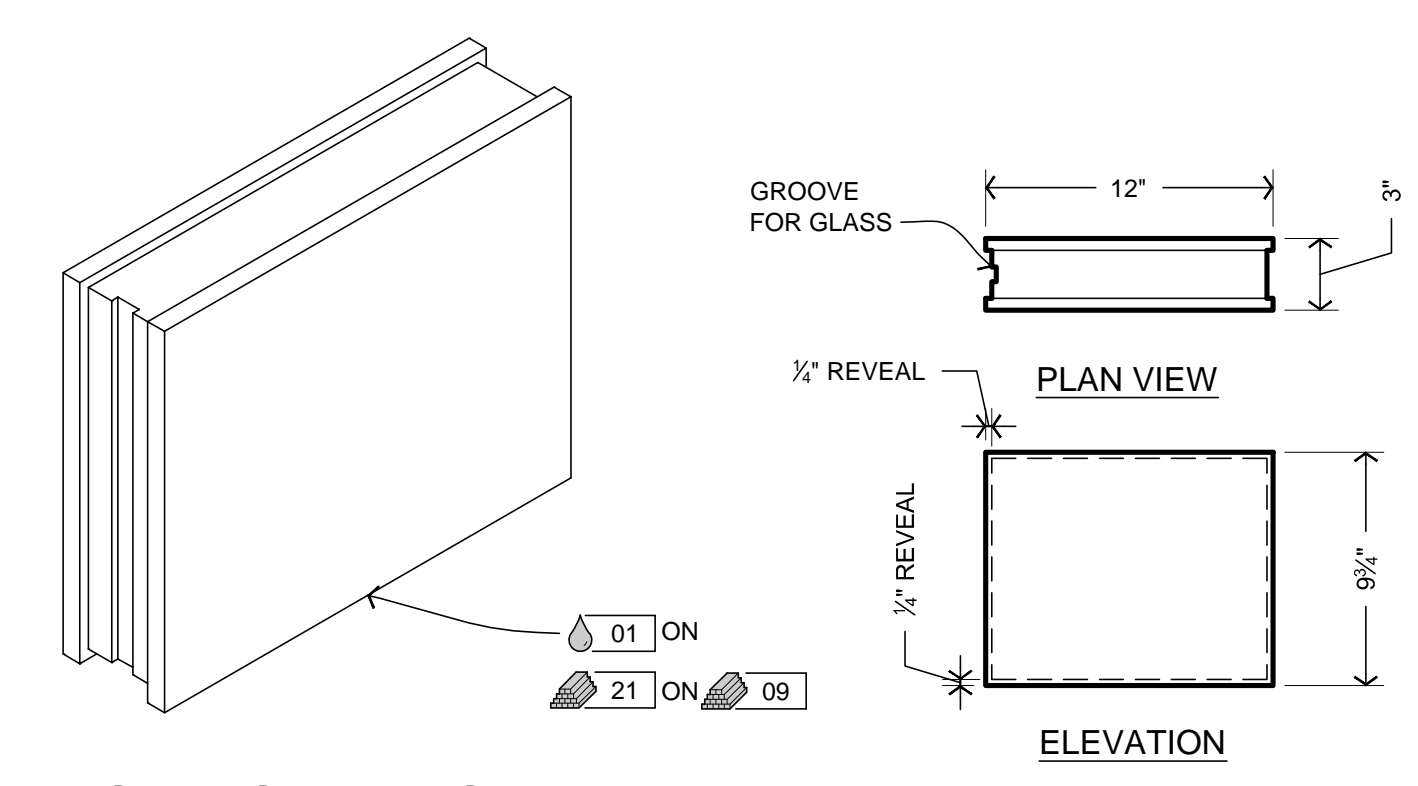
**GLASS PANEL**  
SCALE: 1-1/2" = 1'-0"  
HYND\_203201 FAB-001 **F-001**



**SHROUD**  
SCALE: 1-1/2" = 1'-0"  
HYND\_203201 FAB-005 **F-005**



**EXPLODED ISOMETRIC**  
SCALE: N.T.S.



**SHROUD TOPPER**  
SCALE: 1-1/2" = 1'-0"  
HYND\_203201 FAB-006 **F-006**

FABRICATED PARTS			
TAG	QTY.	SOURCE	DESCRIPTION
F-001	01	SUB	GLASS PANEL
F-002	01	HBS	GLASS BASE
F-004	01	HBS	BASE CABINET
F-005	01	HBS	SHROUD
F-006	01	HBS	SHROUD TOPPER
METALS & EXTRUSIONS			
TAG	DESCRIPTION		
01	ALUMINUM SHEET, 0.063"		
05	ALUMINUM PLATE, 3/8"		
92	ALUMINUM CHANNEL, 2 x 1 x 1/8"		
95	ALUMINUM CHANNEL, 3 x 1 x 1/8"		
113	ALUMINUM TUBE, 2" O.D. x 1/8" wall		
125	ALUMINUM TUBE, 2" Sq. x 1/8" wall		
215	ALUMINUM ANGLE, 3 x 5 x 1/8"		
BUILDING MATERIALS			
TAG	PART #	DESCRIPTION	
08		PLYWOOD, 1/4" MDF	
09		PLYWOOD, 1/2" MDF	
10		PLYWOOD, 3/4" MDF	
16		PLYWOOD, 1/8" LUAN, BENDING	
18		PLYWOOD, 3/8" LUAN, BENDING	
21		LAMINATE, PAINT GRADE	
25		GLASS, 1/2" TEMPERED	
36	SW3	SINTRA PVC FOAM BOARD, 3mm (1/8"), WHITE	
40	SB6	SINTRA PVC FOAM BOARD, 6mm (1/4"), BLACK	
53		1/8" DIA. CLEAR SILICON GLAZING ROD	
FASTENERS & HARDWARE			
TAG	PART #	DESCRIPTION	
06		VELCRO.	
EQUIPMENT & FURNITURE			
TAG	MANUFACTURER	DESCRIPTION	QTY.
05	-	MUFFIN FAN	-
		BY: -	
PAINT & FINISHES			
TAG	COLOR #	DESCRIPTION	
01		BASIC WHITE	
02		EXPOSED SATIN BLACK	
09		HYUNDAI BLUE	

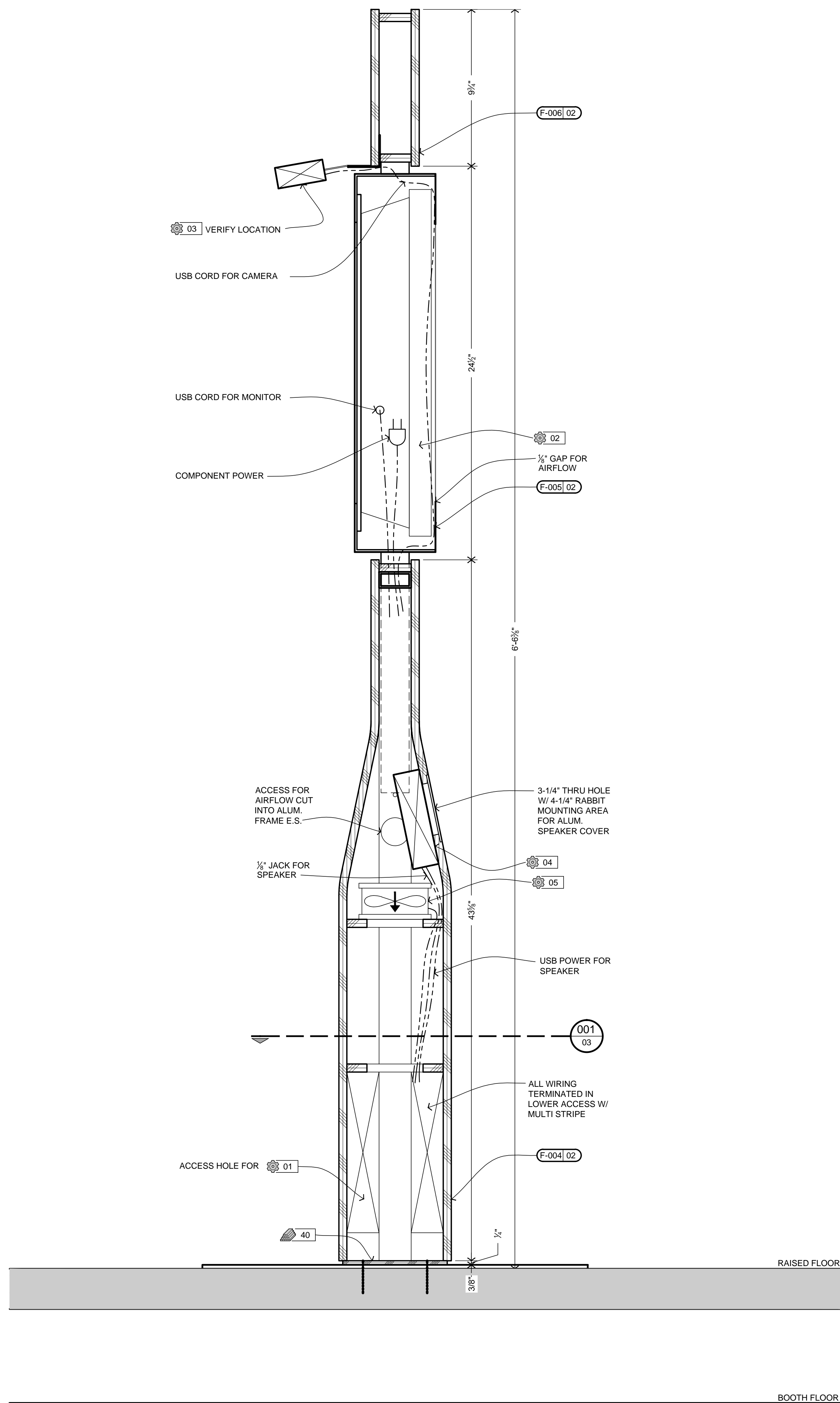
**RELEASE TO PRODUCTION**  
EST. | DESIGN | ENG. | PROD. | EXEC. | DATE  
DY | JKR | AS | 11.09.2011

**DO NOT SCALE DRAWINGS**  
*H.B. Stubbs*  
COMPANIES  
Detroit - Salt Lake City  
585.574.9700  
hbstubs.com

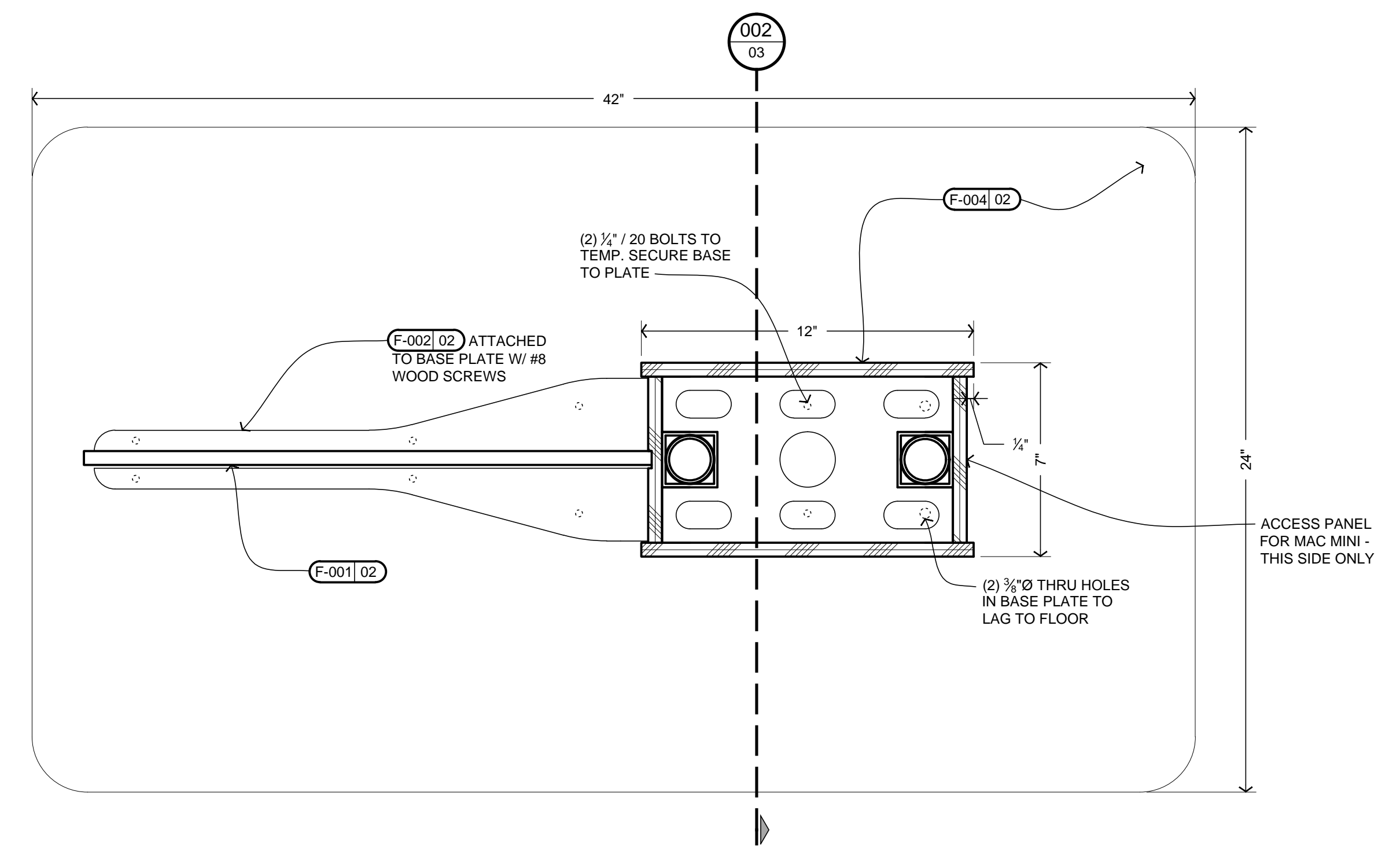
Copyright © 2011 H.B. Stubbs Companies. This document is the property of, and contains information proprietary to the H.B. Stubbs Companies. Any party accepting this document does so in confidence and agrees that it shall not be duplicated, in whole or in part, nor disclosed to others, without written permission of the H.B. Stubbs Companies.

PROJ. MGR.	DESIGNER	EC, DY	ENGINEER
KB	JKR	AS	JKR, JA, TL
CREATION DATE	ISSUE DATE	RELEASE DATE	
10.13.2011	6.19.2013	11.09.2011	
CLIENT NAME	QUANTITY		
HYUNDAI	1		
ELEMENT NAME			
HYBRID AIR DISPLAY C1-K102			
SHEET NO.	DRAWING TITLE		
02	FAB DETAILS		
PROJECT NUMBER	PHASE		
203400	034		

'AS-BUILT' RECORD DOCUMENT  
THIS DOCUMENT HAS RECEIVED ITS FINAL  
UPDATES TO REFLECT CHANGES MADE  
DURING THE CONSTRUCTION PROCESS.



**SECTION**  
SCALE: 3" = 1'-0"  
HYND\_203400 DTL-002



**PLAN DETAIL**  
SCALE: 3" = 1'-0"  
HYND\_203400 DTL-001

FABRICATED PARTS			
TAG	QTY.	SOURCE	DESCRIPTION
F-001	01	SUB	GLASS PANEL
F-002	01	HBS	GLASS BASE
F-004	01	HBS	BASE CABINET
F-005	01	HBS	SHROUD
F-006	01	HBS	SHROUD TOPPER

BUILDING MATERIALS		
TAG	PART #	DESCRIPTION
40	SB6	SINTRA, PVC FOAM BOARD, 6mm (1/4"), BLACK

EQUIPMENT & FURNITURE			
TAG	MANUFACTURER MODEL #	DESCRIPTION BY (PROVIDER)	QTY.
01	APPLE MAC MINI	7.7" x 7.7" x 1.4" BY: -	01
02	NEC P402	47" LCD MULTITOUCH W/ 3M DST TOUCH SENS. BY: -	01
03	LOGITECH C910	3.5" W x 3.0" x 1.5" HD PRO WEBCAM BY: -	01
04	JAWBONE JAMBOX	6" x 2-1/4" x 1-5/8" BY: -	01
05	-	MUFFIN FAN BY: -	-

**RELEASE TO PRODUCTION**  
EST. | DESIGN | ENG. | PROD. | EXEC. | DATE  
DY | JKR | AS | 11.09.2011

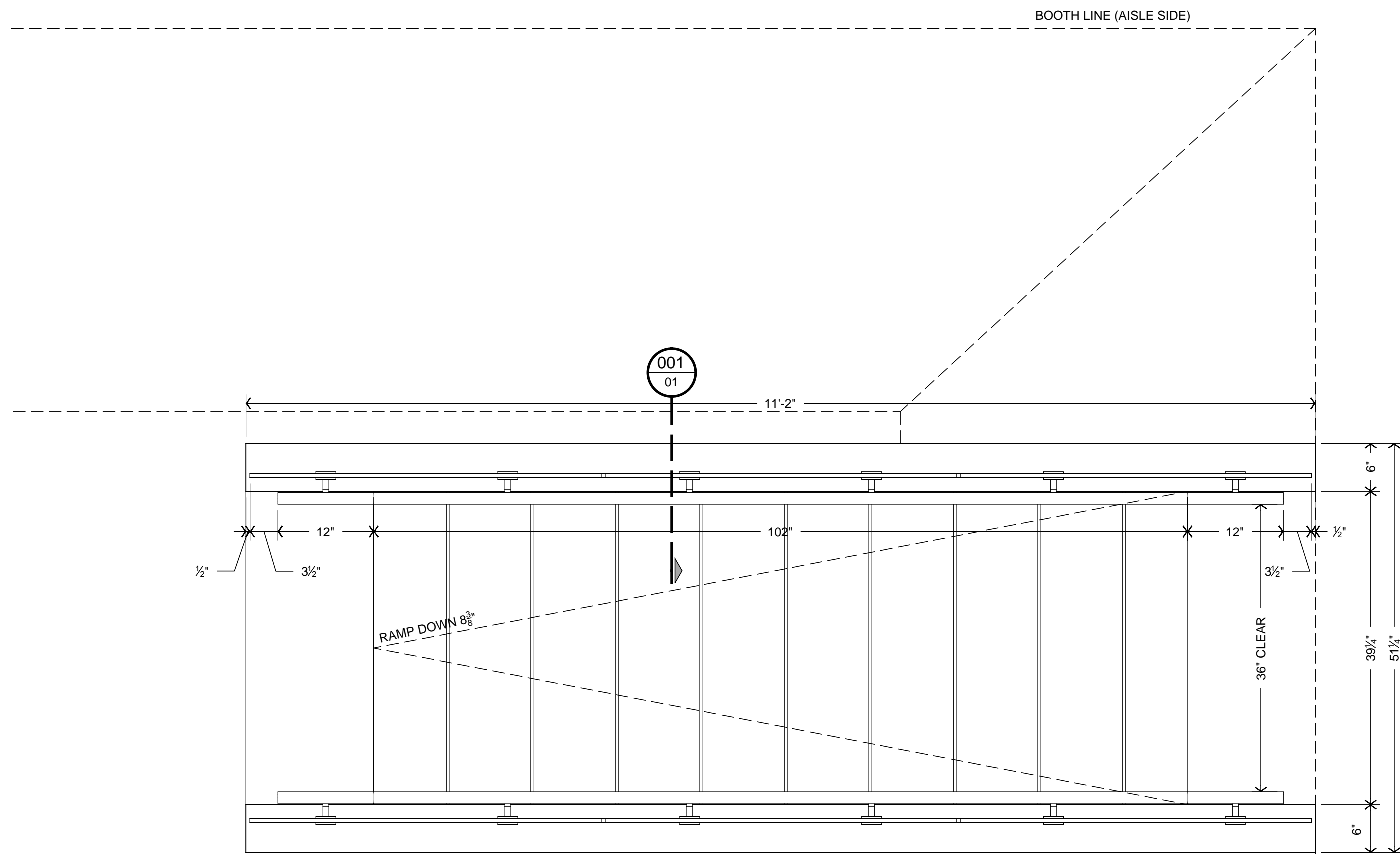
DO NOT SCALE DRAWINGS

*H.B. Stubbs*  
COMPANIES  
Detroit - Salt Lake City  
588.574.9700  
hbstubbs.com

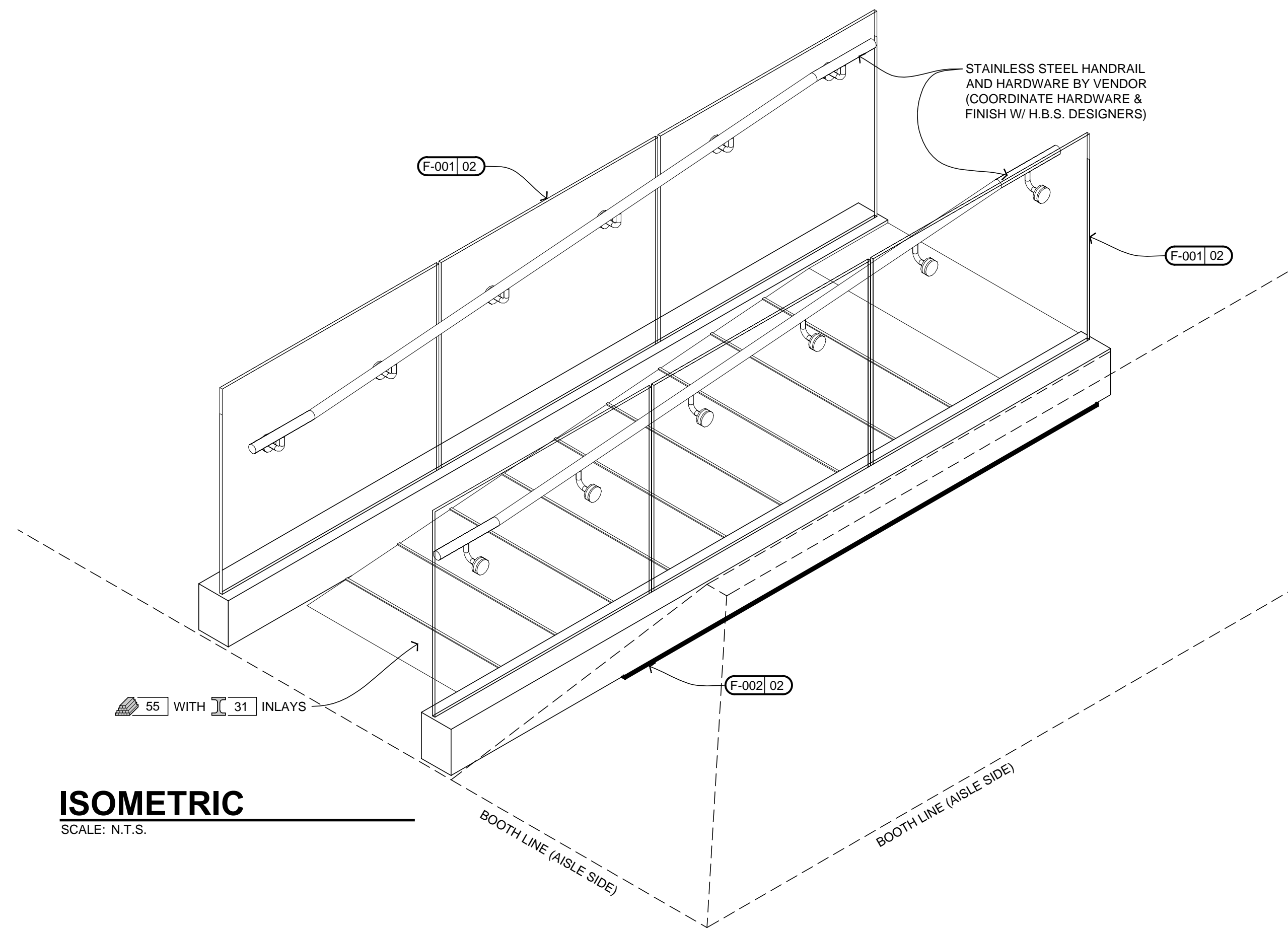
Copyright © 2011 H.B. Stubbs Companies. This document is the property of, and contains information proprietary to the H.B. Stubbs Companies. Any party accepting this document does so in confidence and agrees that it shall not be duplicated, in whole or in part, nor disclosed to others, without written permission of the H.B. Stubbs Companies.

PROJ. MGR.	DESIGNER	ENGINEER	QUANTITY
KB	EC, DY	JKR, JA, TL	1
CREATION DATE	ISSUE DATE	RELEASE DATE	
10.17.2011	6.19.2013	11.09.2011	
CLIENT NAME	ELEMENT NAME		
HYUNDAI	HYBRID AIR DISPLAY C1-K102		
SHEET NO.	DRAWING TITLE	PHASE	
03	PLANS & DETAILS		
PROJECT NUMBER	PHASE		
203400			034

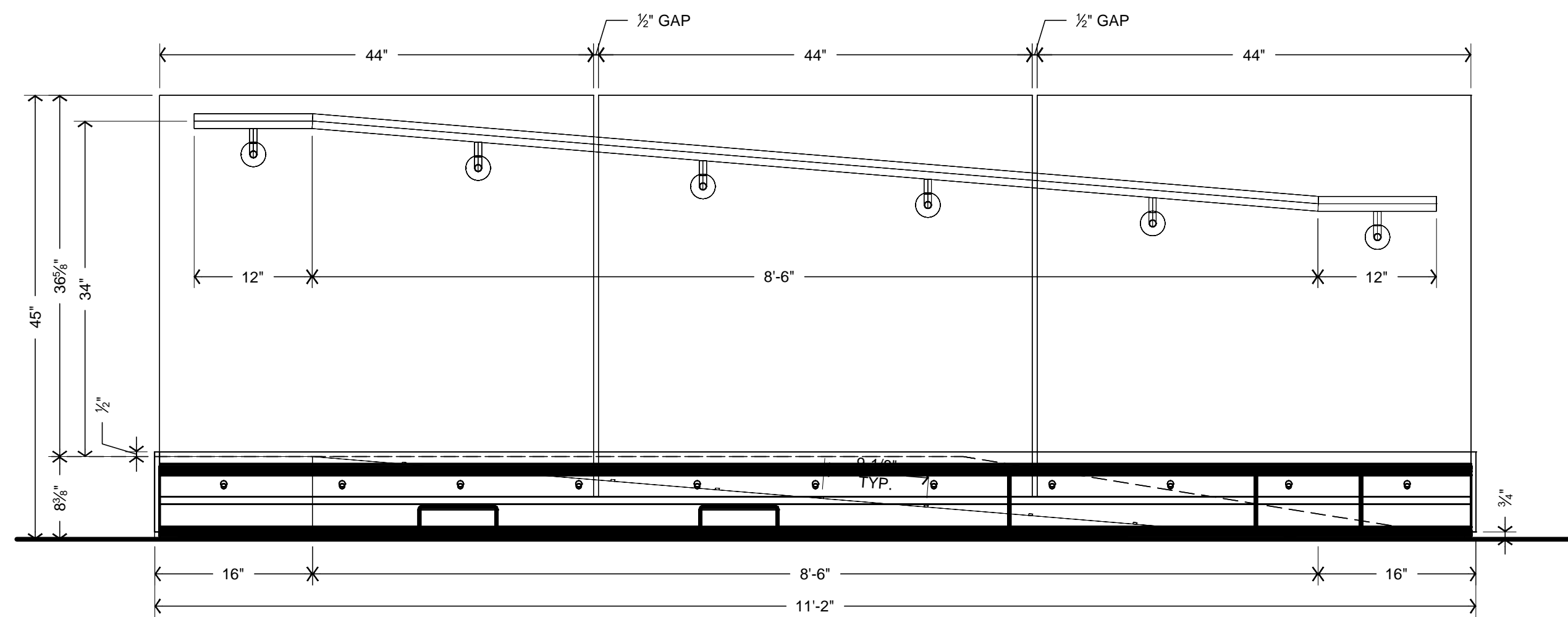
'AS-BUILT' RECORD DOCUMENT  
THIS DOCUMENT HAS RECEIVED ITS FINAL  
UPDATES TO REFLECT CHANGES MADE  
DURING THE CONSTRUCTION PROCESS.



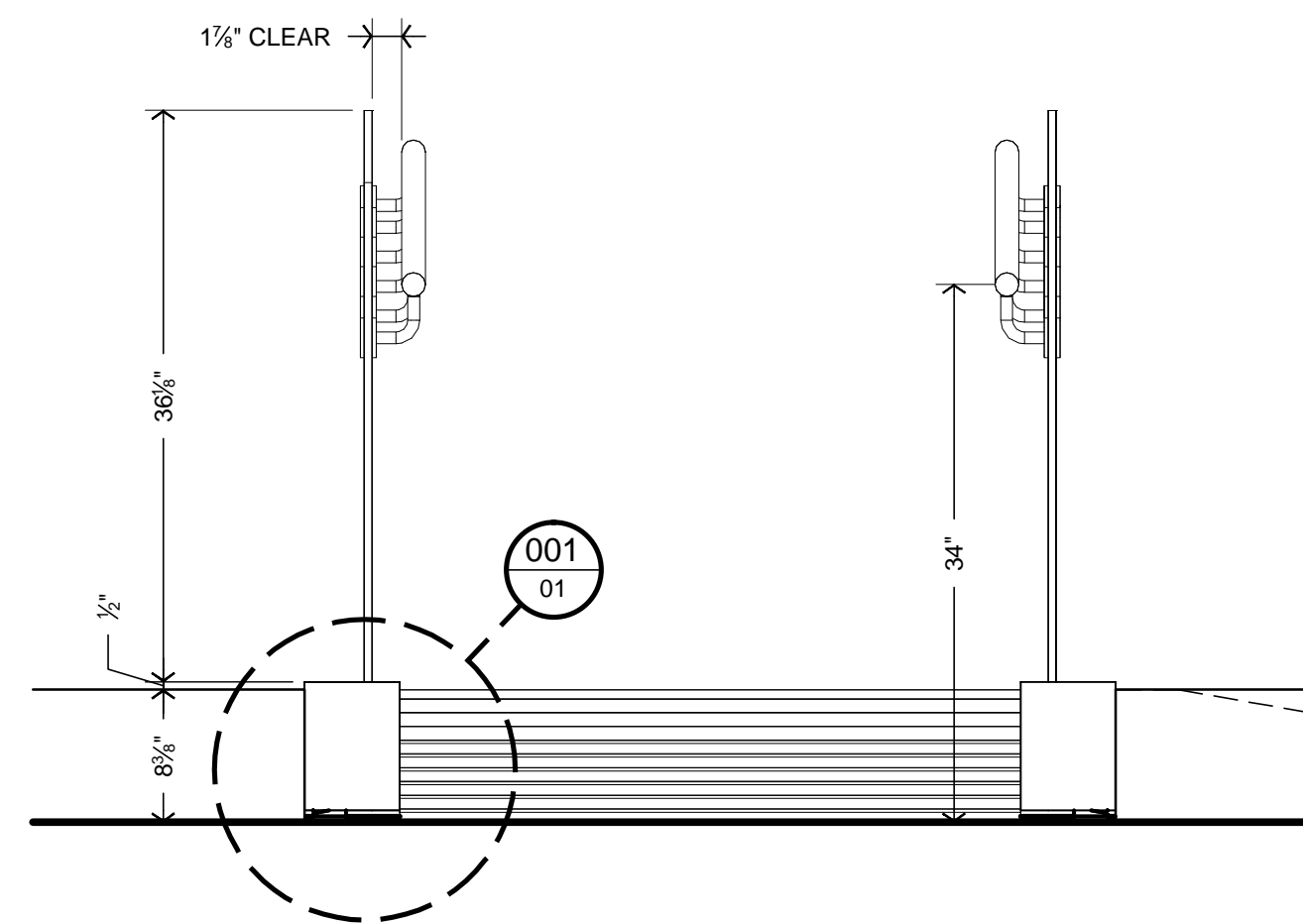
**PLAN VIEW**  
SCALE: 1" = 1'-0"



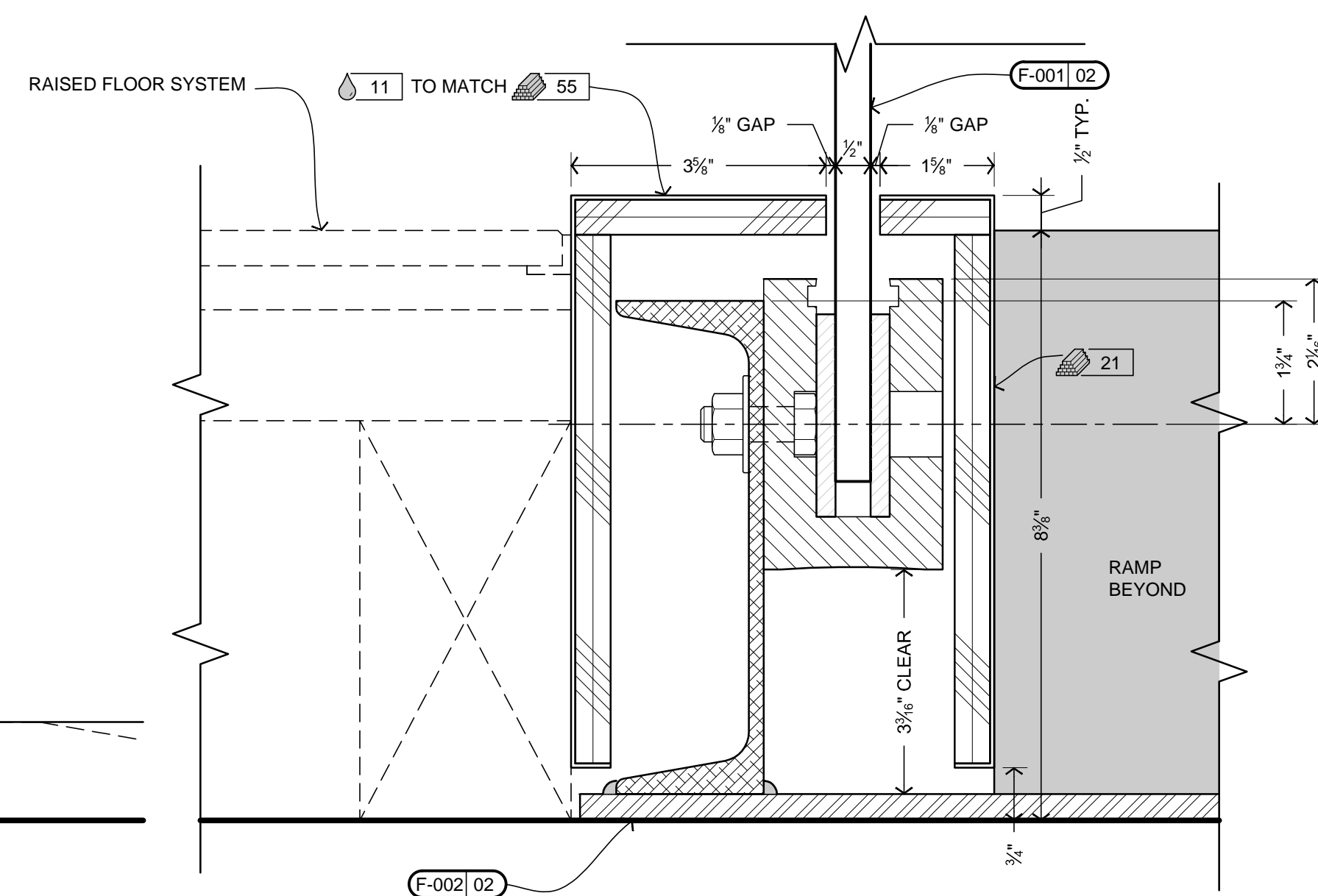
**ISOMETRIC**  
SCALE: N.T.S.



**SIDE SECTION**  
SCALE: 1" = 1'-0"



**FRONT ELEVATION**  
SCALE: 1" = 1'-0"



**SECTION**  
SCALE: 6" = 1'-0"

FABRICATED PARTS		
TAG	QTY.	SOURCE
F-001	02	SUB
F-002	01	SUB
GLASS RAILINGS		
BASE PLATE & CHANNEL		
METALS & EXTRUSIONS		
TAG	DESCRIPTION	
31	ALUMINUM BAR, SQUARE, 3/8"	
BUILDING MATERIALS		
TAG	DESCRIPTION	
21	LAMINATE, PAINT GRADE	
55	1/2" THICK SOLID SURFACE	
PAINT & FINISHES		
TAG	COLOR #	DESCRIPTION
11		BLACK, SATIN

**RELEASE TO PRODUCTION**  
EST. DESIGN ENGR. PROD. EXEC. DATE  
KB DY PS MB 10.05.2011

DO NOT SCALE DRAWINGS

*H.B. Stubbs*  
COMPANIES

Detroit - Salt Lake City  
588.574.9700  
hbstubbs.com

Copyright © 2011 H.B. Stubbs Companies. This document is the property of, and contains information proprietary to the H.B. Stubbs Companies. Any party accepting this document does so in confidence and agrees that it shall not be duplicated, in whole or in part, nor disclosed to others, without written permission of the H.B. Stubbs Companies.

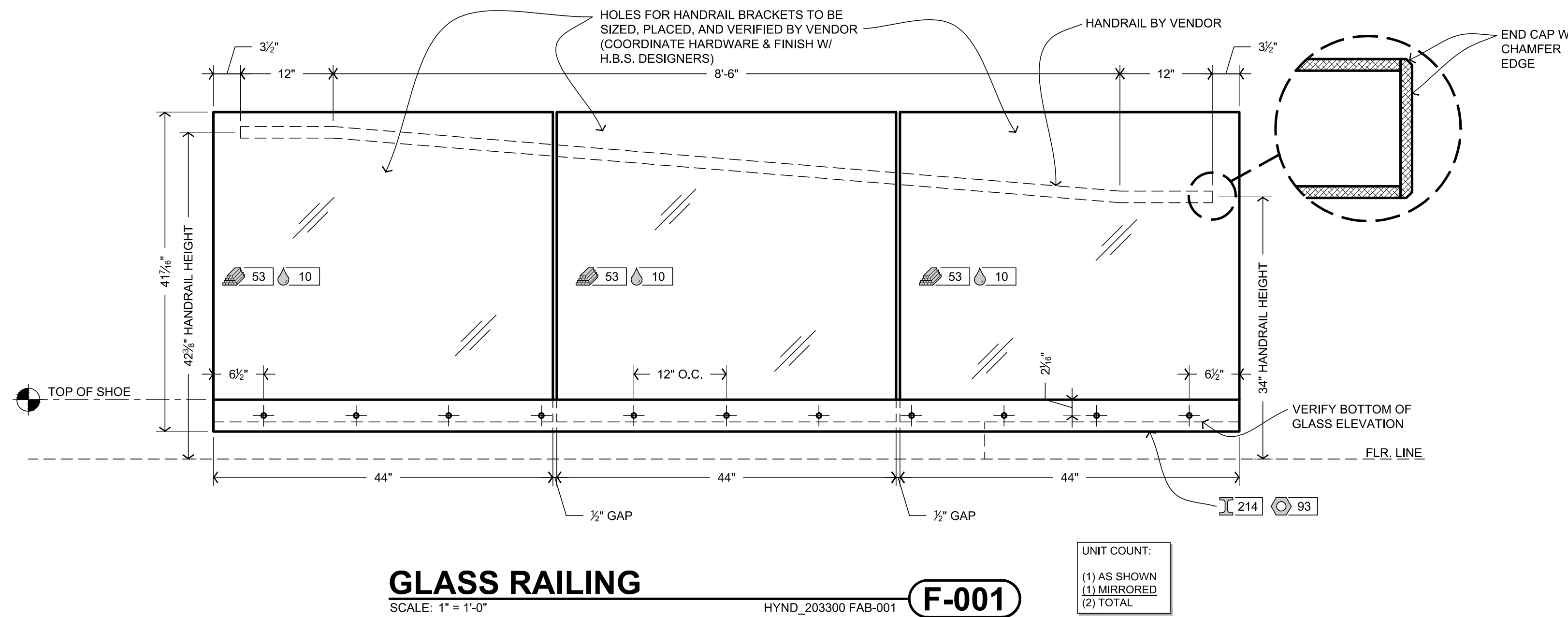
PROJ. MGR.	DESIGNER	ENGINEER	QUANTITY
KB	EC, DY	JKR, JA	2
CREATION DATE	ISSUE DATE	RELEASE DATE	
09.14.2011	6.19.2013	10.5.2011	

CLIENT NAME	ELEMENT NAME	QUANTITY
HYUNDAI	BF RAMP A1-RP01	2
SHEET NO.	DRAWING TITLE	PHASE
01	PLAN, ELEVATIONS, & ISOMETRICS	

PROJECT NUMBER	PHASE
2-03-400	029

'AS-BUILT' RECORD DOCUMENT  
THIS DOCUMENT HAS RECEIVED ITS FINAL  
UPDATES TO REFLECT CHANGES MADE  
DURING THE CONSTRUCTION PROCESS.

001  
01  
HYND\_203300 DTL-001



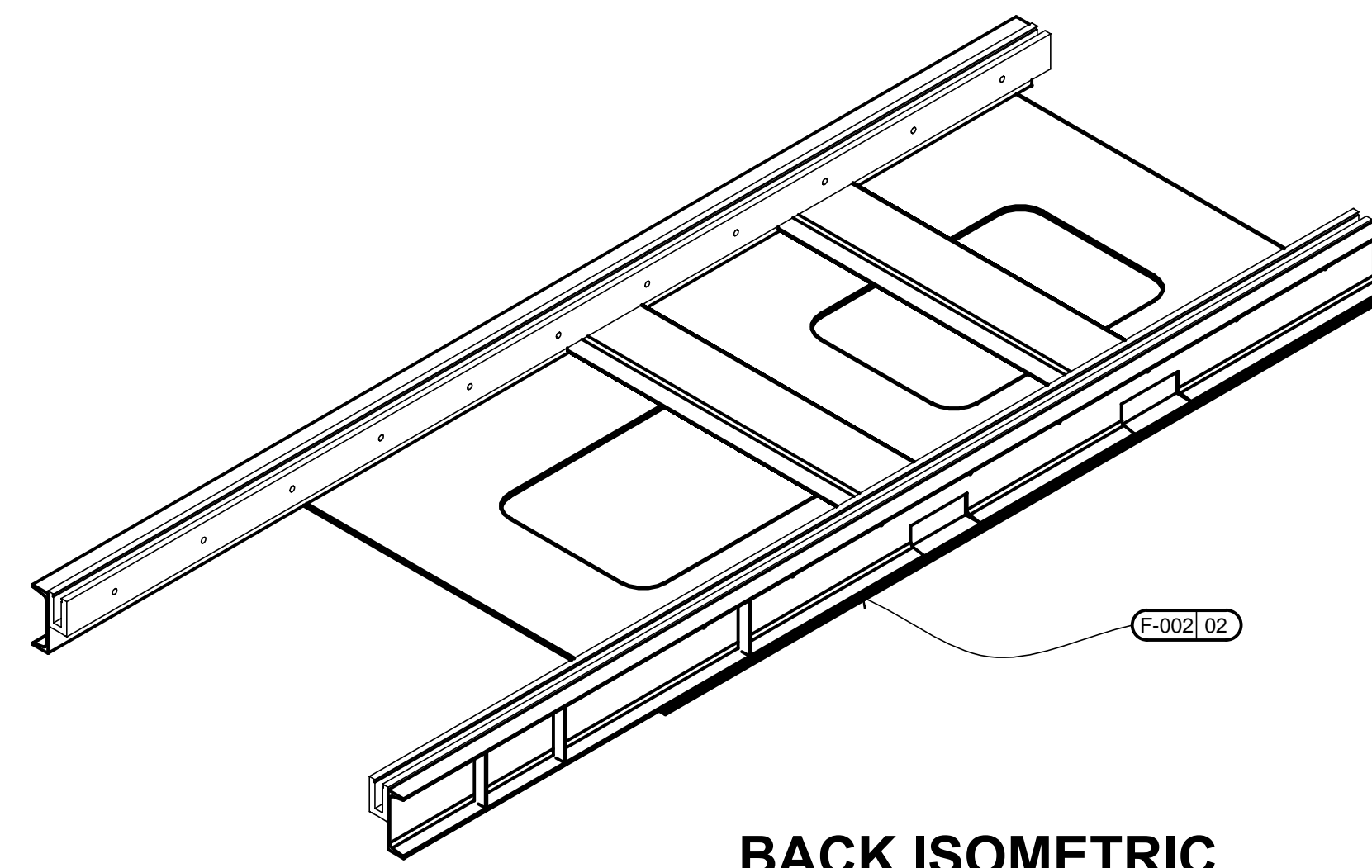
**GLASS RAILING**

SCALE: 1" = 1'-0"

HYND\_203300 FAB-001

**F-001**

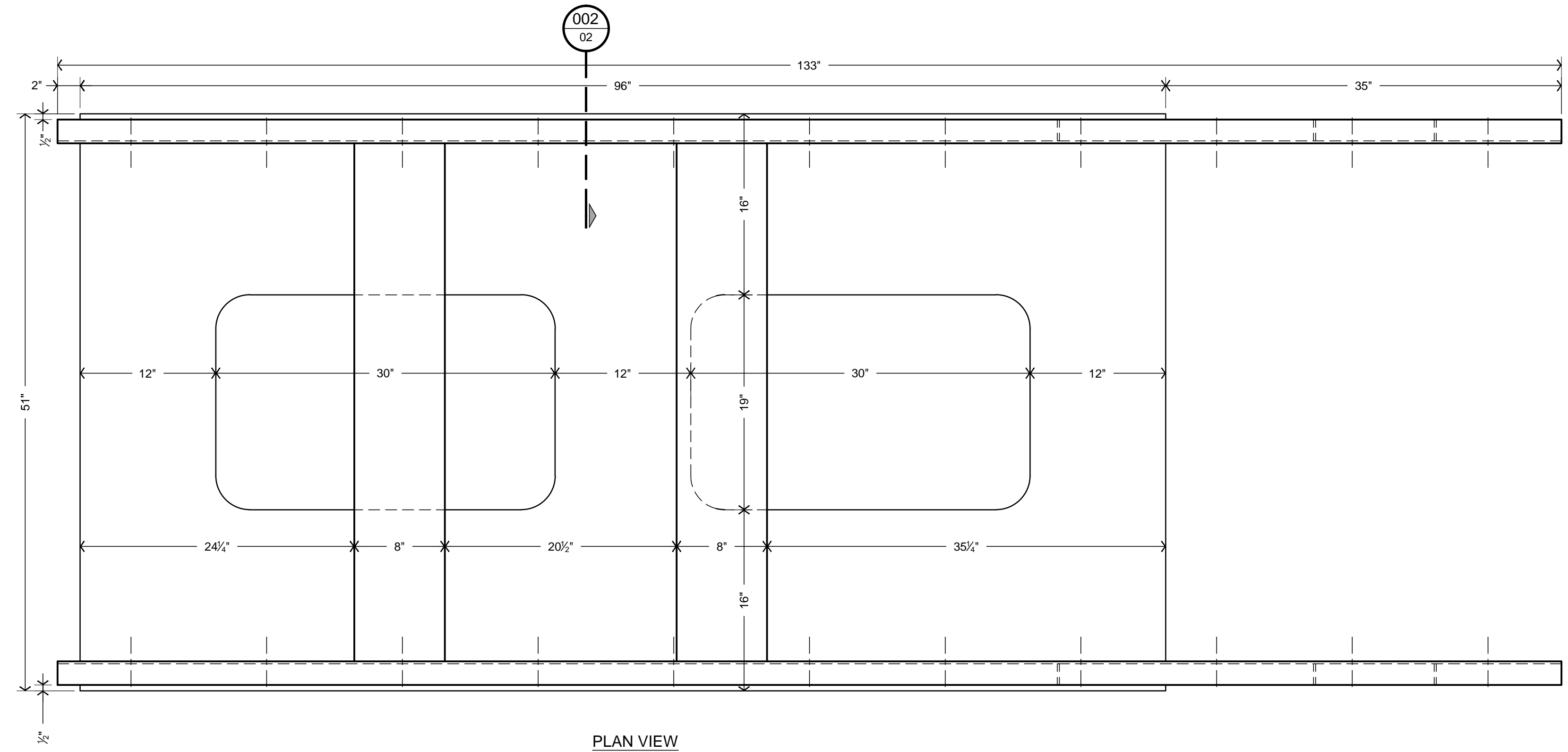
UNIT COUNT:  
 (1) AS SHOWN  
 (1) MIRRORED  
 (2) TOTAL



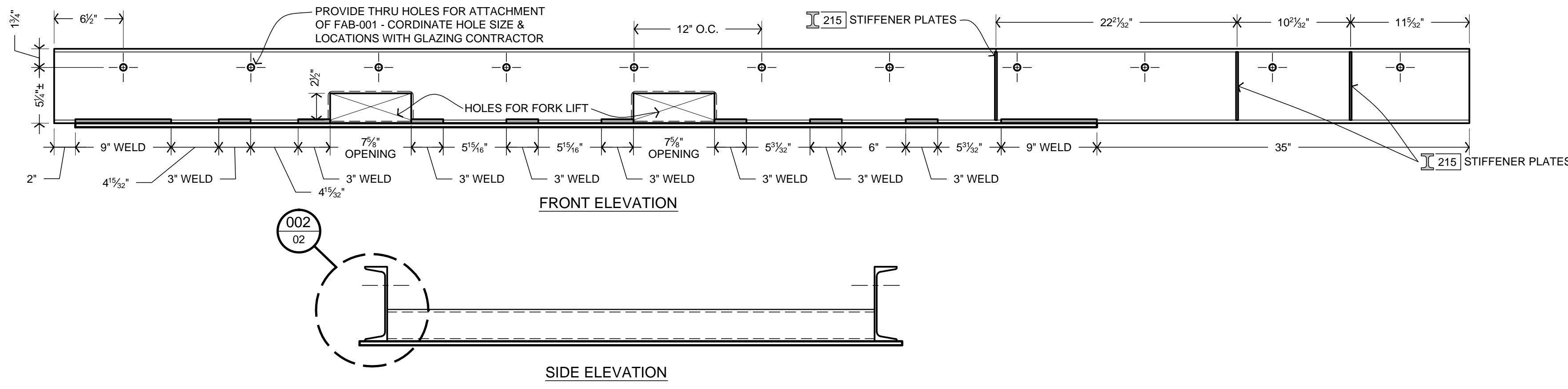
**BACK ISOMETRIC**

SCALE: N.T.S.

FABRICATED PARTS		
TAG	QTY.	SOURCE DESCRIPTION
F-001	02	SUB GLASS RAILINGS
F-002	01	SUB BASE PLATE & CHANNEL
METALS & EXTRUSIONS		
TAG	DESCRIPTION	
I 15	STEEL PLATE, 3/8"	
I 213	STEEL CHANNEL, C7 x 9.8	
I 214	ALUMINUM SHOE, FOR GLASS RAIL	
I 215	STEEL PLATE, 3/16" STIFFENER	
I 216	STEEL TUBE, 3" x 8" x 3/16"	
BUILDING MATERIALS		
TAG	PART #	DESCRIPTION
53		GLASS, 1/2" CLEAR - FULLY TEMPERED
FASTENERS & HARDWARE		
TAG	PART #	DESCRIPTION
93		FASTENER, TAPER-LOC
PAINT & FINISHES		
TAG	COLOR #	DESCRIPTION
10		POLISHED EDGE

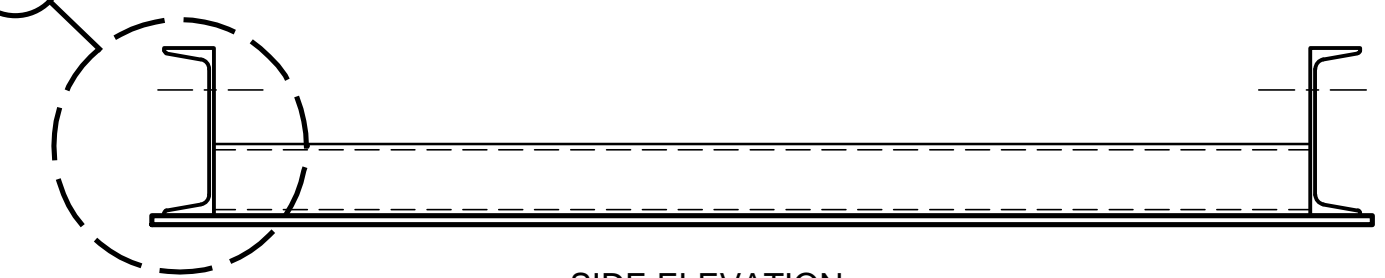


**PLAN VIEW**



**FRONT ELEVATION**

002 02



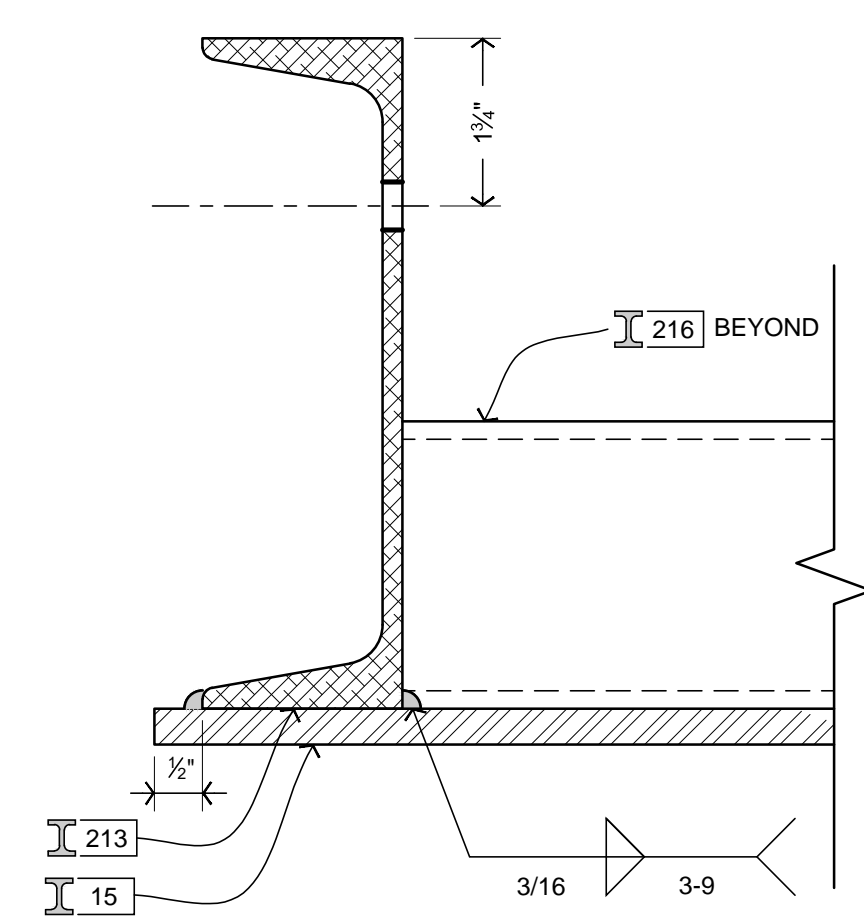
**SIDE ELEVATION**

**BASE PLATE & CHANNEL**

SCALE: 1-1/2" = 1'-0"

HYND\_203300 FAB-002

**F-002**



**SECTION**

SCALE: 6" = 1'-0"

HYND\_203300 DTL-002

002 02

'AS-BUILT' RECORD DOCUMENT  
 THIS DOCUMENT HAS RECEIVED ITS FINAL  
 UPDATES TO REFLECT CHANGES MADE  
 DURING THE CONSTRUCTION PROCESS.

**RELEASE TO PRODUCTION**

EST. DESIGN ENG. PROD. EXEC. DATE

KB DY PS MB 10.05.2011

DO NOT SCALE DRAWINGS

*H.B. Stubbs*  
 COMPANIES

Detroit - Salt Lake City  
 588.574.9700  
 hbstubbs.com

Copyright © 2011 H.B. Stubbs Companies. This document is the property of, and contains information proprietary to the H.B. Stubbs Companies. Any party accepting this document does so in confidence and agrees that it shall not be duplicated, in whole or in part, nor disclosed to others, without written permission of the H.B. Stubbs Companies.

PROJ. MGR. DESIGNER ENGINEER

KB EC, DY JKR, JA

CREATION DATE ISSUE DATE RELEASE DATE

09.14.2011 6.19.2013 10.05.2011

CLIENT NAME QUANTITY

HYUNDAI 2

ELEMENT NAME

BF RAMP A1-RP01

SHEET NO. DRAWING TITLE

02 FAB PLANS & DETAILS

PROJECT NUMBER PHASE

2-03-400 029